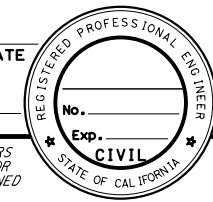
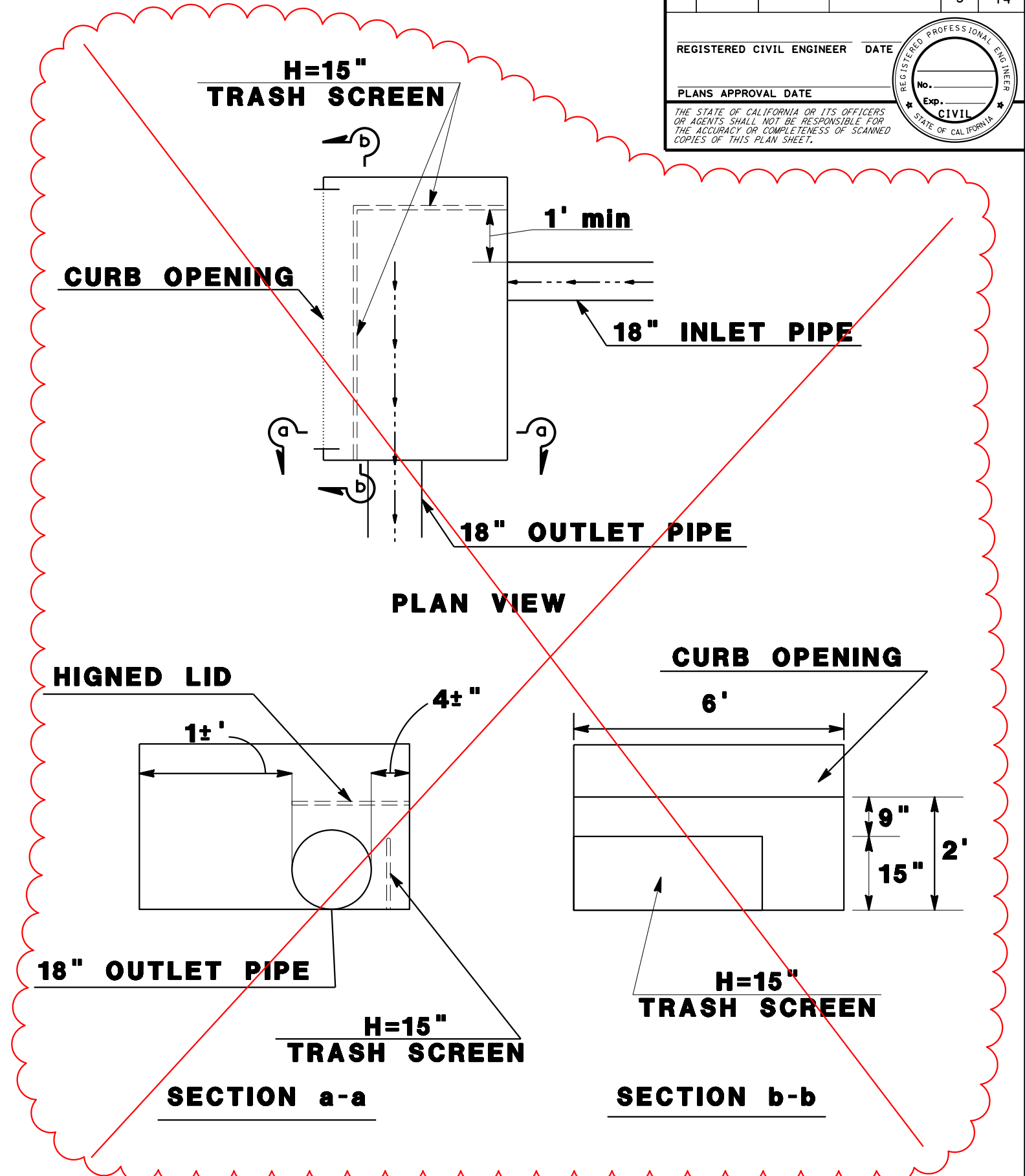
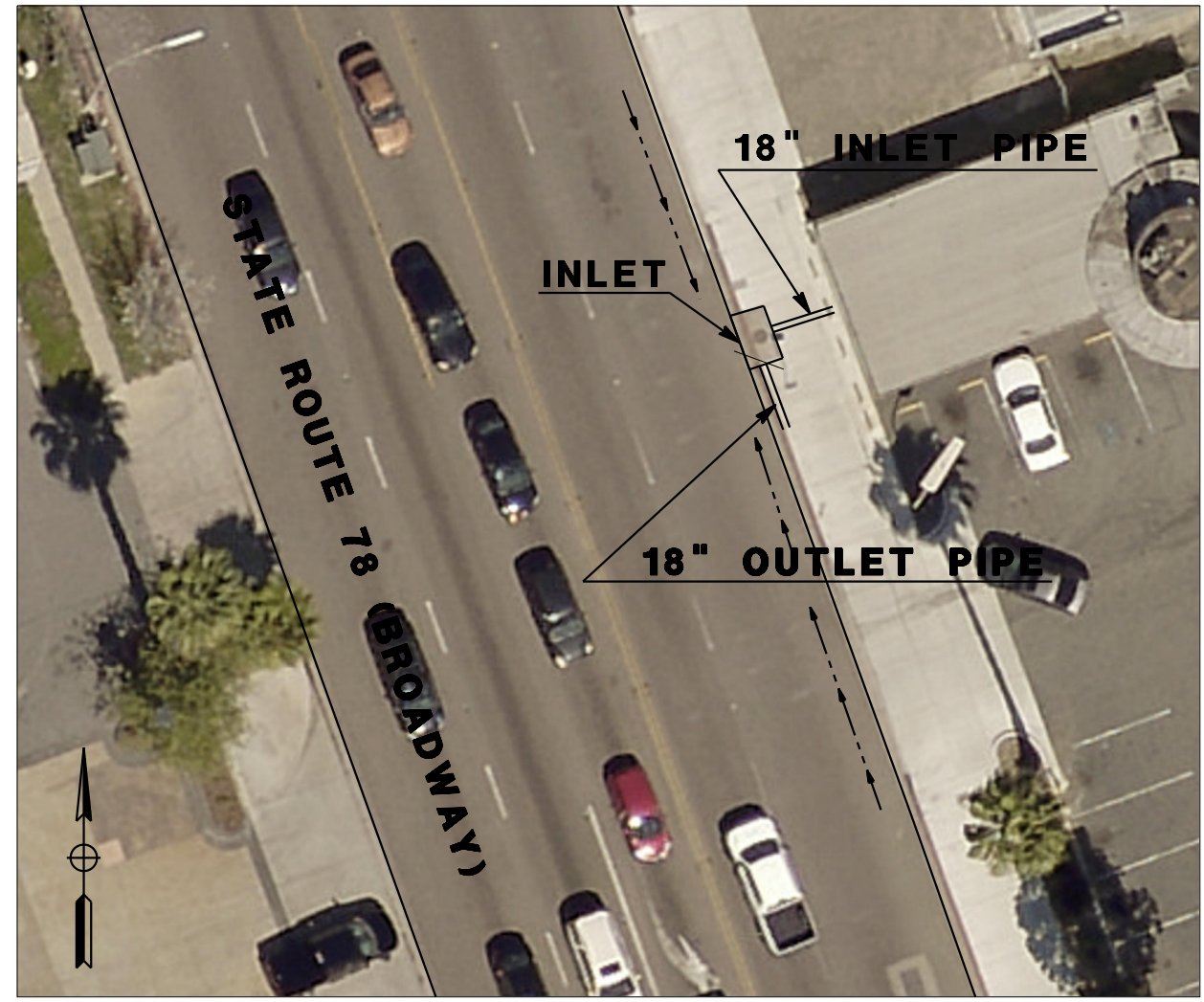



Dist	COUNTY	LOCATION CODE	POST MILES TOTAL PROJECT	SHEET No.	TOTAL SHEETS
				3	14
REGISTERED CIVIL ENGINEER			DATE		
PLANS APPROVAL DATE					
<small>THE STATE OF CALIFORNIA OR ITS OFFICERS OR AGENTS SHALL NOT BE RESPONSIBLE FOR THE ACCURACY OR COMPLETENESS OF SCANNED COPIES OF THIS PLAN SHEET.</small>					

- NOTE:
1. H = HEIGHT OF TRASH SCREEN
 2. RECOMMENDATION - 15" HIGH TRASH SCREEN WITH HIGNED LID
 3. TOP EDGE OF TRASH SCREEN SHALL BE ROUNDED OR COVERED WITH A HORIZONTAL PIECE TO PROVIDE FOR WORKER SAFETY AND PREVENT DAMAGE TO INSPECTION CAMERA CABLES.
 4. UNITED STORMWATER INC. TO PROVIDE INSTALLATION OF TRASH SCREEN AT LOCATION 1.
 5. PLACE TRASH SCREEN MARKER. SEE SHEET 14.



NOT TO SCALE

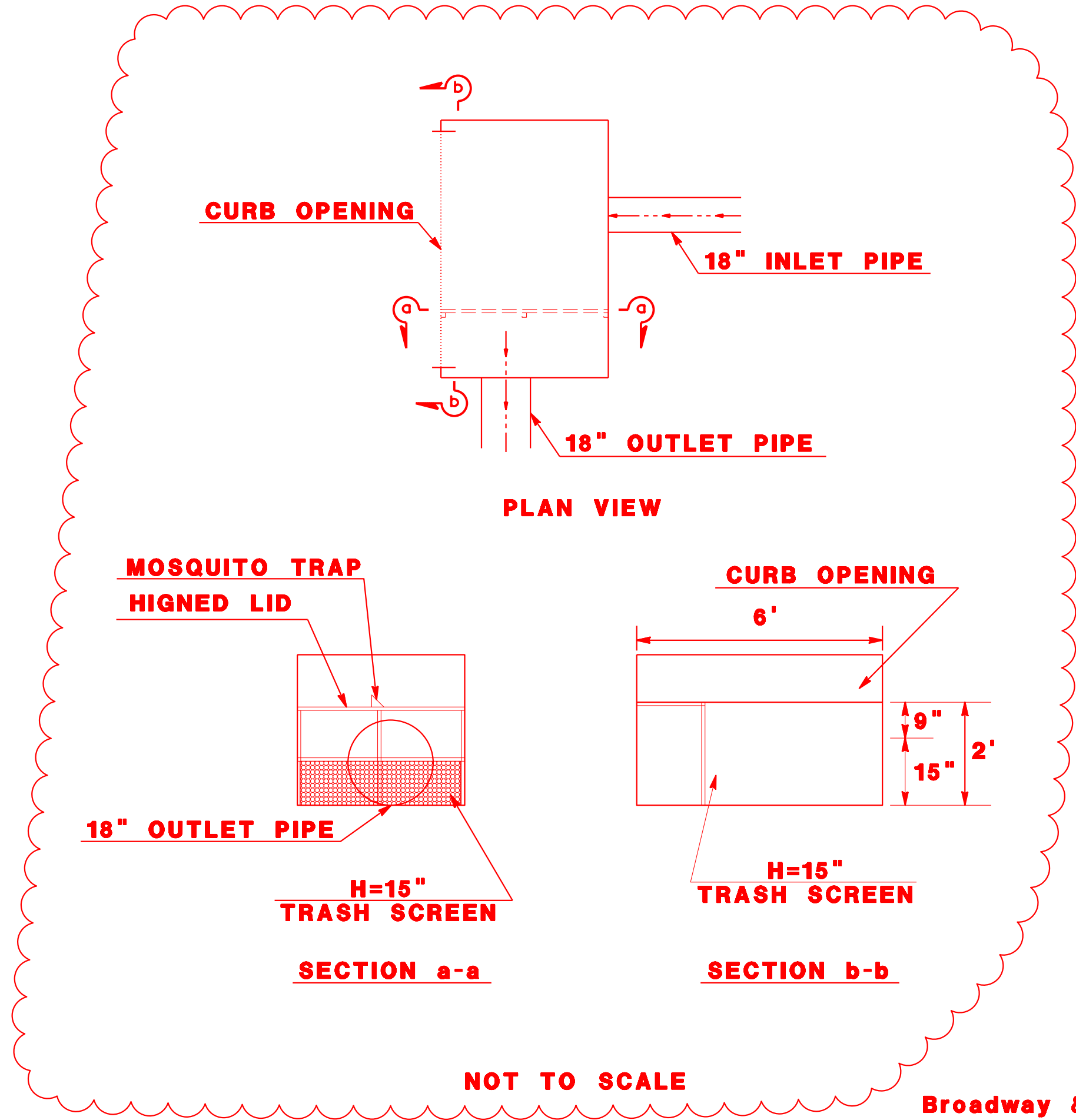
EXHIBIT - LOCATION 1
Broadway & Mission (200 ft North)

STATE OF CALIFORNIA - DEPARTMENT OF TRANSPORTATION	FUNCTIONAL SUPERVISOR	CALCULATED-DESIGNED BY	REVISOR	DATE
		CHECKED BY	DATE	

Dist	COUNTY	LOCATION CODE	POST MILES TOTAL PROJECT	SHEET No.	TOTAL SHEETS
				3a	14
REGISTERED CIVIL ENGINEER			DATE		
PLANS APPROVAL DATE					
<small>THE STATE OF CALIFORNIA OR ITS OFFICERS OR AGENTS SHALL NOT BE RESPONSIBLE FOR THE ACCURACY OR COMPLETENESS OF SCANNED COPIES OF THIS PLAN SHEET.</small>					



STATE OF CALIFORNIA - DEPARTMENT OF TRANSPORTATION	FUNCTIONAL SUPERVISOR	CALCULATED-DESIGNED BY	REVISOR BY
Caltrans		CHECKED BY	DATE REVISED



NOT TO SCALE

**EXHIBIT - LOCATION 1a
Broadway & Mission (200 ft North)**

LAST REVISION DATE PLOTTED => 31-MAY-2022 00-00-00 TIME PLOTTED => 13:53

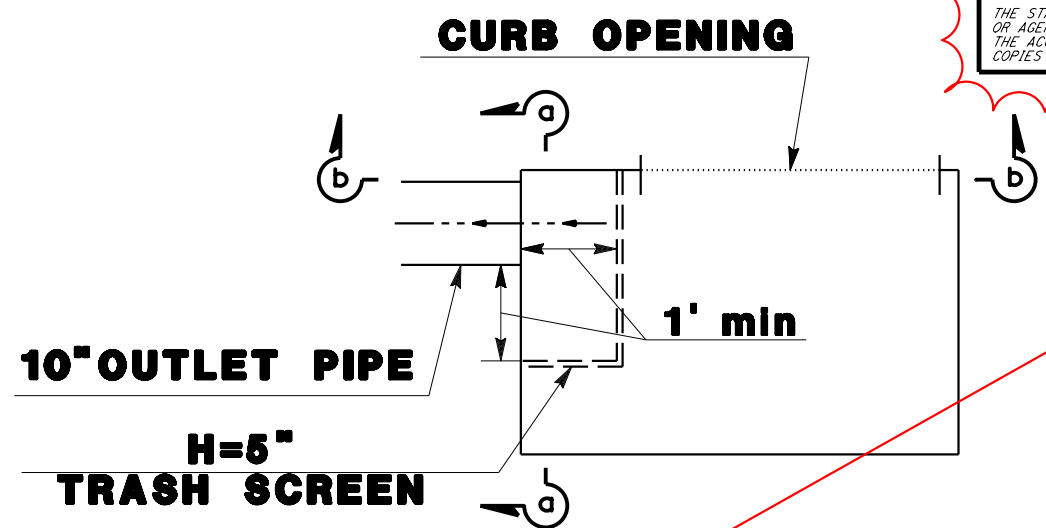
Dist	COUNTY	LOCATION CODE	POST MILES TOTAL PROJECT	SHEET No.	TOTAL SHEETS
				4	14

REGISTERED CIVIL ENGINEER	DATE
PLANS APPROVAL DATE	

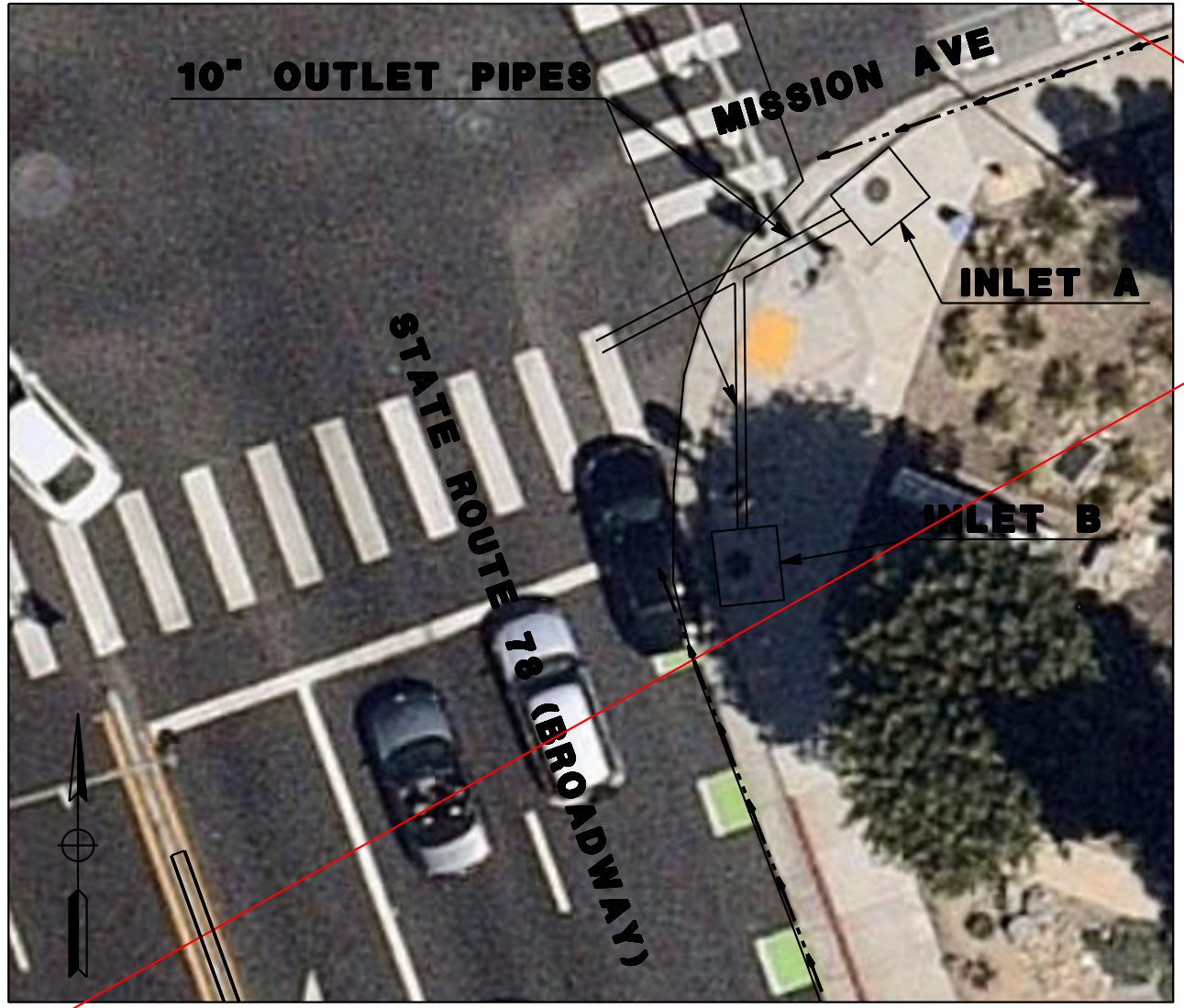
THE STATE OF CALIFORNIA OR ITS OFFICERS OR AGENTS SHALL NOT BE RESPONSIBLE FOR THE ACCURACY OR COMPLETENESS OF SCANNED COPIES OF THIS PLAN SHEET.



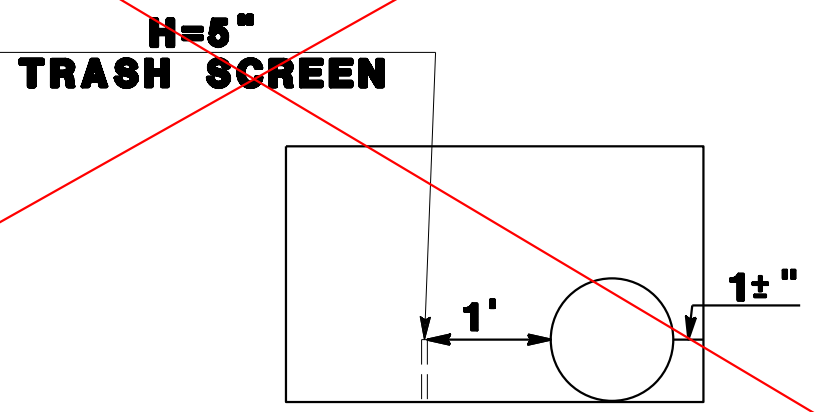
- NOTE:**
1. H = HEIGHT OF TRASH SCREEN
 2. RECOMMENDATION - 5" HIGH TRASH SCREEN WITH NO BYPASS LID (BOTH LOCATIONS)
 3. TOP EDGE OF TRASH SCREEN SHALL BE ROUNDED OR COVERED WITH A HORIZONTAL PIECE TO PROVIDE FOR WORKER SAFETY AND PREVENT DAMAGE TO INSPECTION CAMERA CABLES.
 4. UNITED STORMWATER INC TO PROVIDE INSTALLATION OF BOTH TRASH SCREENS AT LOCATION 2.
 5. PLACE TRASH SCREEN MARKER. SEE SHEET 14.



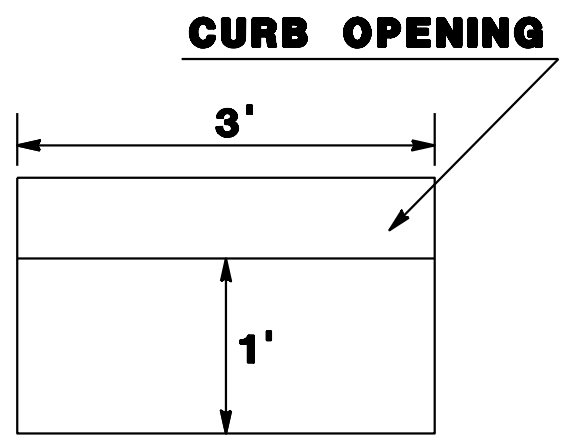
PLAN VIEW



NOT TO SCALE



SECTION a-a



SECTION b-b

INLET A

REMOVED FROM PROJECT

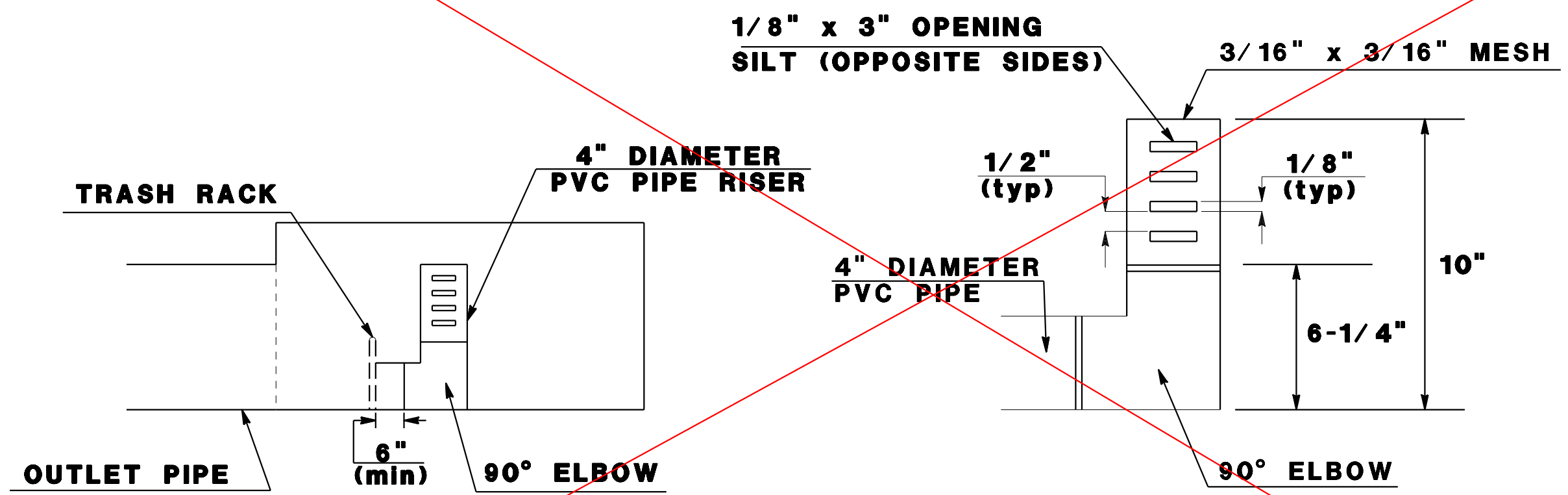
EXHIBIT - LOCATION 2
Broadway & Mission
(PAGE 1 OF 2)

STATE OF CALIFORNIA - DEPARTMENT OF TRANSPORTATION
 Caltrans

Dist	COUNTY	LOCATION CODE	POST MILES TOTAL PROJECT	SHEET No.	TOTAL SHEETS
REGISTERED CIVIL ENGINEER				DATE	
PLANS APPROVAL DATE				No.	
				Exp.	
<small>THE STATE OF CALIFORNIA OR ITS OFFICERS OR AGENTS SHALL NOT BE RESPONSIBLE FOR THE ACCURACY OR COMPLETENESS OF SCANNED COPIES OF THIS PLAN SHEET.</small>					



- NOTE:**
1. H = HEIGHT OF TRASH SCREEN
 2. RECOMMENDATION - 5" HIGH TRASH SCREEN WITH NO BYPASS LID (BOTH LOCATIONS)
ADD PIPE RISERS TO BOTH LOCATION (SEE DETAIL)
 3. TOP EDGE OF TRASH SCREEN SHALL BE ROUNDED OR COVERED WITH A HORIZONTAL PIECE TO PROVIDE FOR WORKER SAFETY AND PREVENT DAMAGE TO INSPECTION CAMERA CABLES.



RISER PIPE DETAIL

REMOVED FROM PROJECT
NOT TO SCALE

EXHIBIT - LOCATION 2
Broadway & Mission
PIPE RISER DETAIL
(PAGE 3 OF 3)

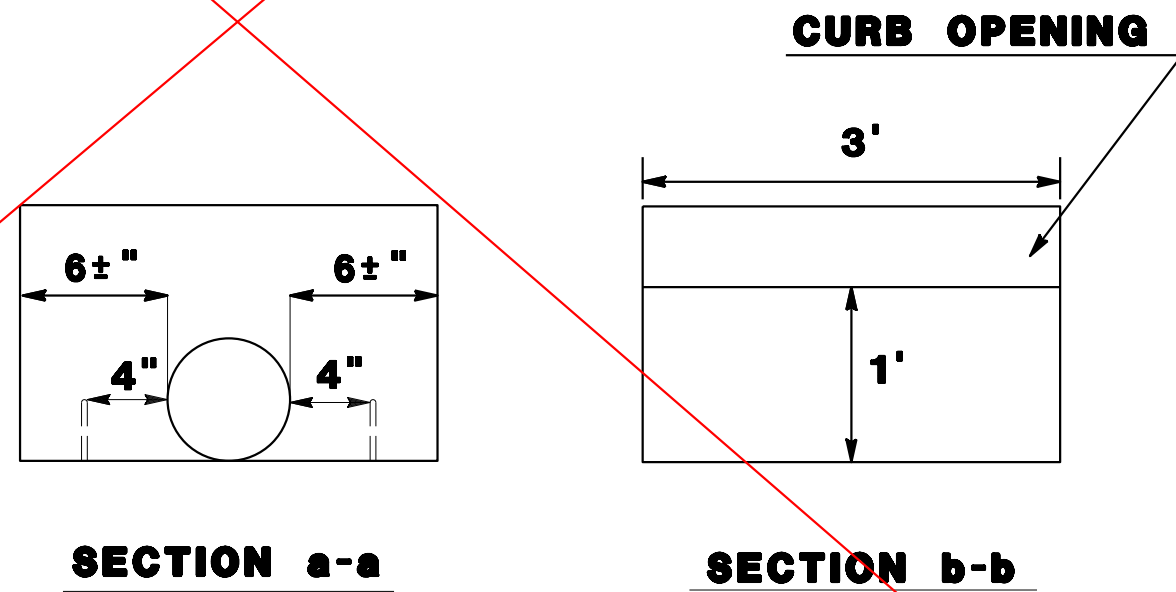
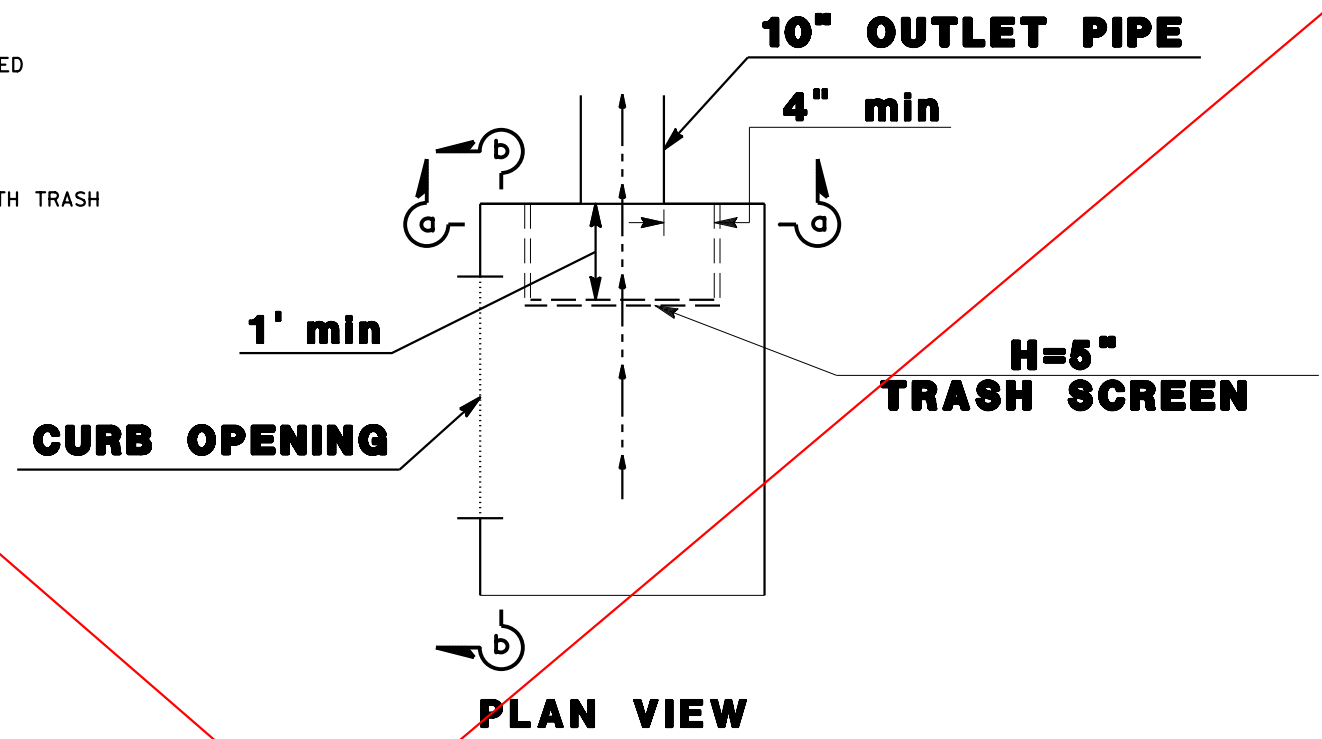
STATE OF CALIFORNIA - DEPARTMENT OF TRANSPORTATION	REVISOR	DATE
Caltrans	BY	
FUNCTIONAL SUPERVISOR	CHECKED BY	
CALCULATED-DESIGNED BY	REVISOR	DATE
CHECKED BY	REVISOR	DATE

LAST REVISION DATE PLOTTED => 31-MAY-2022
00-00-00 TIME PLOTTED => 14:01

Dist	COUNTY	LOCATION CODE	POST MILES TOTAL PROJECT	SHEET No.	TOTAL SHEETS
				5	14
REGISTERED CIVIL ENGINEER			DATE		
PLANS APPROVAL DATE					
<small>THE STATE OF CALIFORNIA OR ITS OFFICERS OR AGENTS SHALL NOT BE RESPONSIBLE FOR THE ACCURACY OR COMPLETENESS OF SCANNED COPIES OF THIS PLAN SHEET.</small>					



- NOTE:
1. H = HEIGHT OF TRASH SCREEN
 2. RECOMMENDATION - 5" HIGH TRASH SCREEN WITH NO BYPASS LID (BOTH LOCATIONS)
ADD PIPE RISERS TO BOTH LOCATION (SEE DETAIL)
 3. TOP EDGE OF TRASH SCREEN SHALL BE ROUNDED OR COVERED WITH A HORIZONTAL PIECE TO PROVIDE FOR WORKER SAFETY AND PREVENT DAMAGE TO INSPECTION CAMERA CABLES.
 4. UNITED STORMWATER INC TO PROVIDE INSTALLATION OF BOTH TRASH SCREENS AT LOCATION 2.
 5. PLACE TRASH SCREEN MARKER. SEE SHEET 14.



INLET B

REMOVED FROM PROJECT
NOT TO SCALE

EXHIBIT - LOCATION 2
Broadway & Mission
(PAGE 2 OF 2)

STATE OF CALIFORNIA - DEPARTMENT OF TRANSPORTATION	REVISOR	DATE
Caltrans	DESIGNED BY	CHECKED BY
	FUNCTIONAL SUPERVISOR	
	CALCULATED BY	
	DESIGNED BY	
	CHECKED BY	
	REVISOR	DATE
	REVISOR	DATE

LAST REVISION | DATE PLOTTED => 31-MAY-2022
00-00-00 | TIME PLOTTED => 14:03

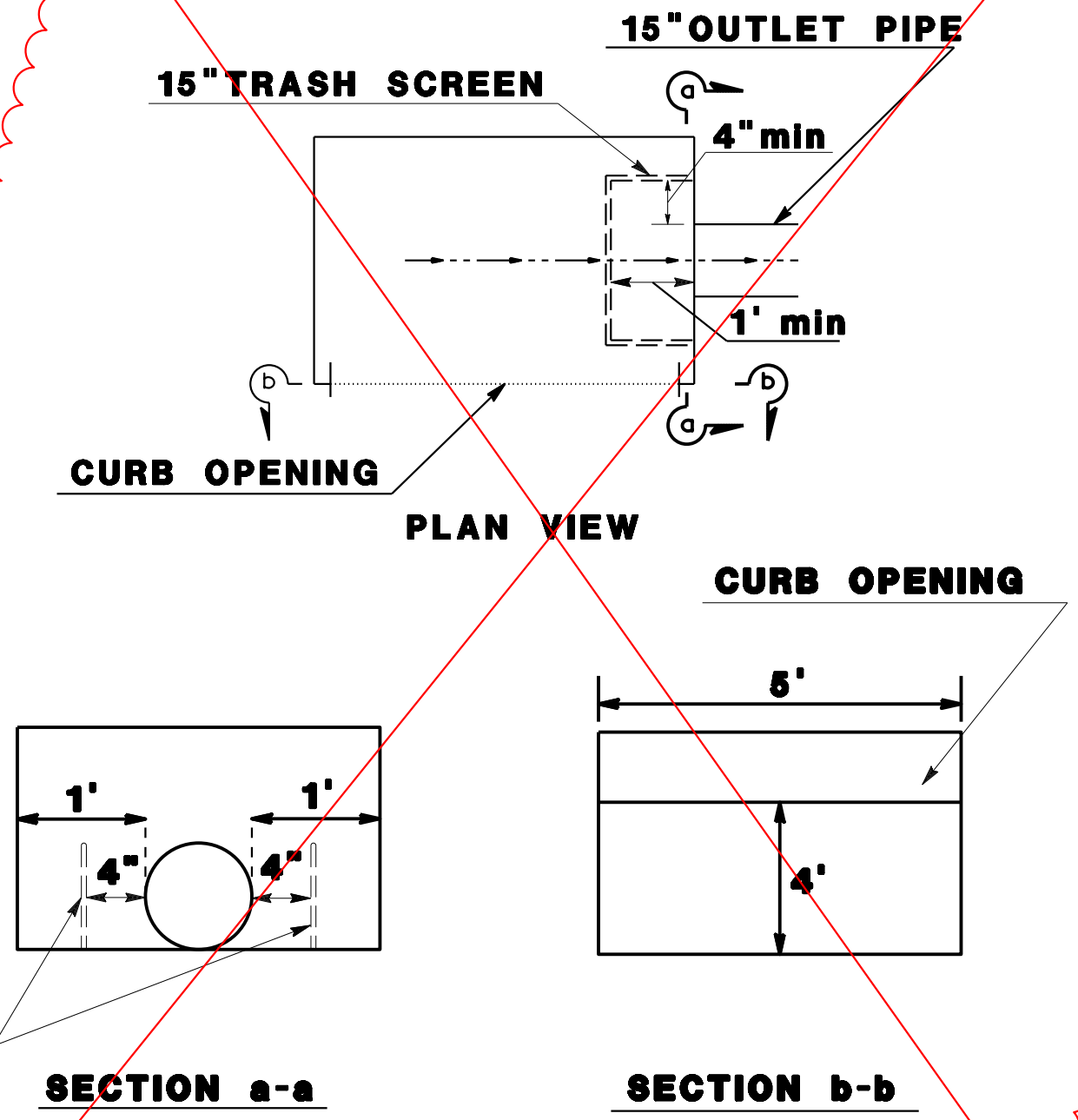
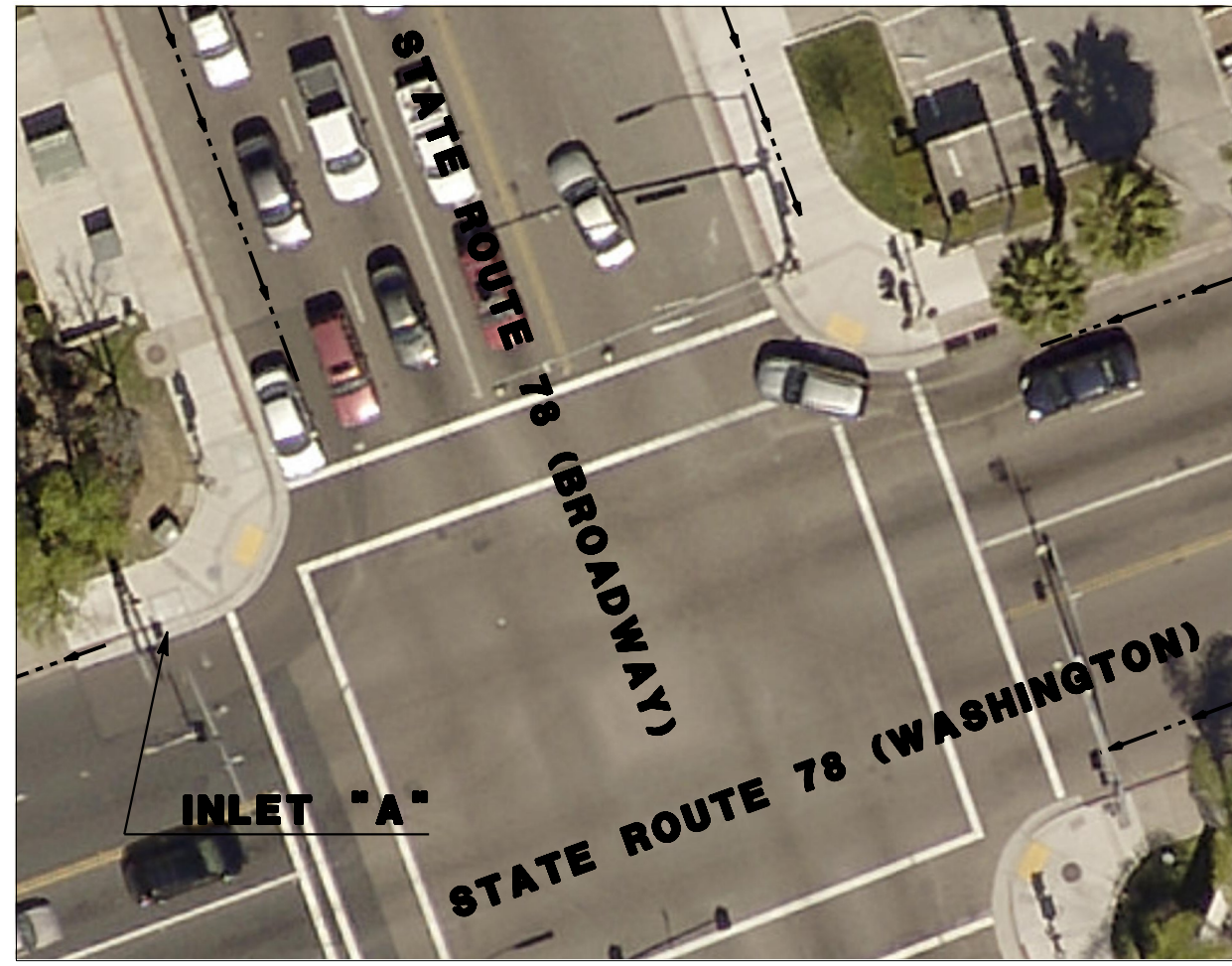
Dist	COUNTY	LOCATION CODE	POST MILES TOTAL PROJECT	SHEET No.	TOTAL SHEETS
				6	14

REGISTERED CIVIL ENGINEER	DATE
PLANS APPROVAL DATE	

REGISTERED PROFESSIONAL ENGINEER	No.
Exp.	
CIVIL	

THE STATE OF CALIFORNIA OR ITS OFFICERS OR AGENTS SHALL NOT BE RESPONSIBLE FOR THE ACCURACY OR COMPLETENESS OF SCANNED COPIES OF THIS PLAN SHEET.

- NOTE:
- H = HEIGHT OF TRASH SCREEN
 - RECOMMENDATION: INLET "A" - 15" HIGH TRASH SCREEN WITH NO BYPASS LID
NO RECOMMENDATION FOR OTHER INLET (INACCESSIBLE)
 - TOP EDGE OF TRASH SCREEN SHALL BE ROUNDED OR COVERED WITH A HORIZONTAL PIECE TO PROVIDE FOR WORKER SAFETY AND PREVENT DAMAGE TO INSPECTION CAMERA CABLES.
 - UNITED STORMWATER INC. TO PROVIDE INSTALLATION OF TRASH SCREEN AT LOCATION 3.
 - PLACE TRASH SCREEN MARKER. SEE SHEET 14.



H=15"
TRASH SCREEN
SECTION a-a

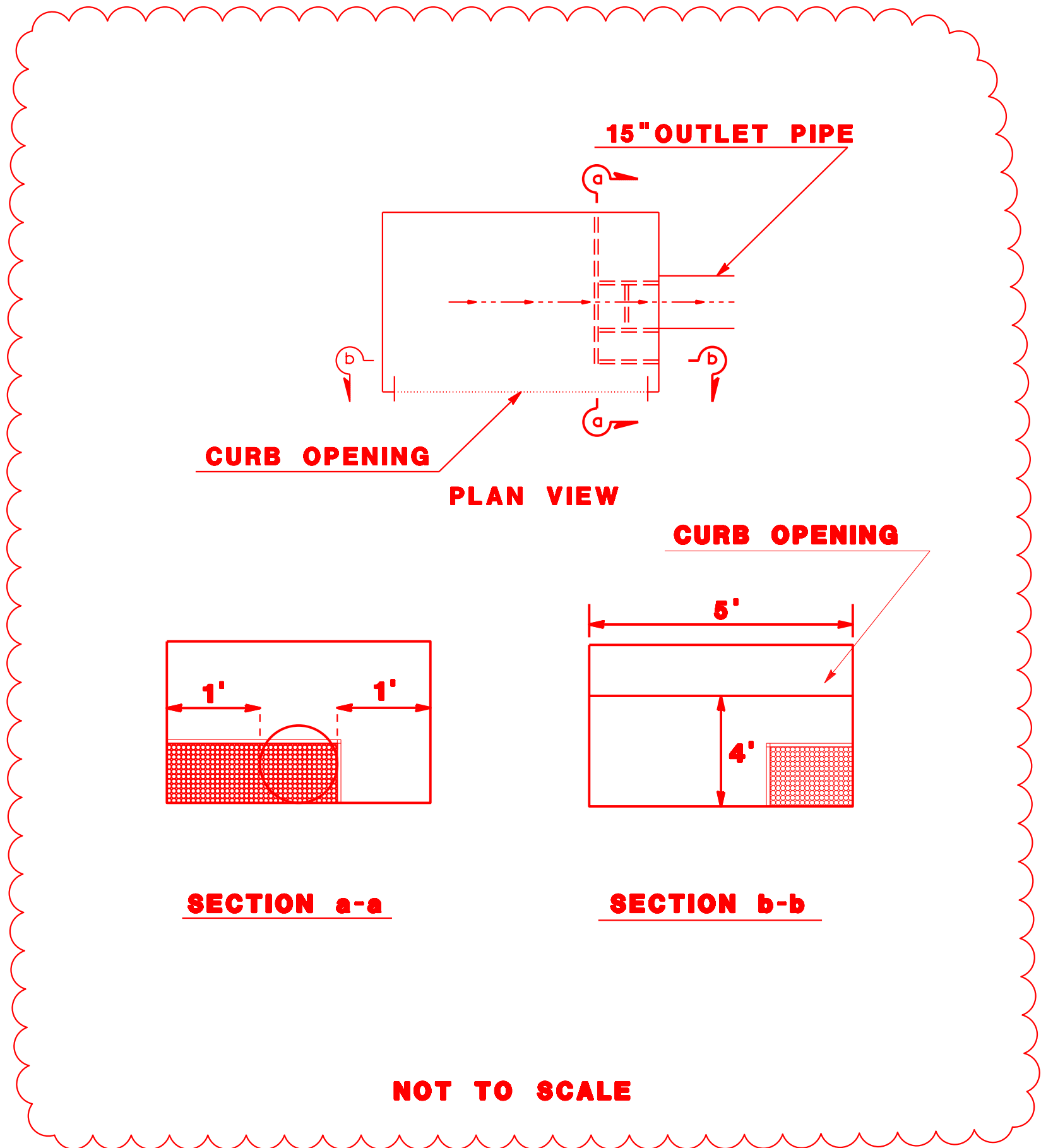
CURB OPENING
SECTION b-b

NOT TO SCALE

EXHIBIT - LOCATION 3
Broadway & Washington

STATE OF CALIFORNIA - DEPARTMENT OF TRANSPORTATION
 CALTRANS
 FUNCTIONAL SUPERVISOR
 CALCULATED/DESIGNED BY
 CHECKED BY
 REVISED BY
 DATE REVISED

Dist	COUNTY	LOCATION CODE	POST MILES TOTAL PROJECT	SHEET No.	TOTAL SHEETS
				6a	14
REGISTERED CIVIL ENGINEER			DATE		
PLANS APPROVAL DATE					
<small>THE STATE OF CALIFORNIA OR ITS OFFICERS OR AGENTS SHALL NOT BE RESPONSIBLE FOR THE ACCURACY OR COMPLETENESS OF SCANNED COPIES OF THIS PLAN SHEET.</small>					



STATE OF CALIFORNIA - DEPARTMENT OF TRANSPORTATION	FUNCTIONAL SUPERVISOR	CALCULATED-DESIGNED BY	REVISOR BY
Caltrans		CHECKED BY	DATE REVISED

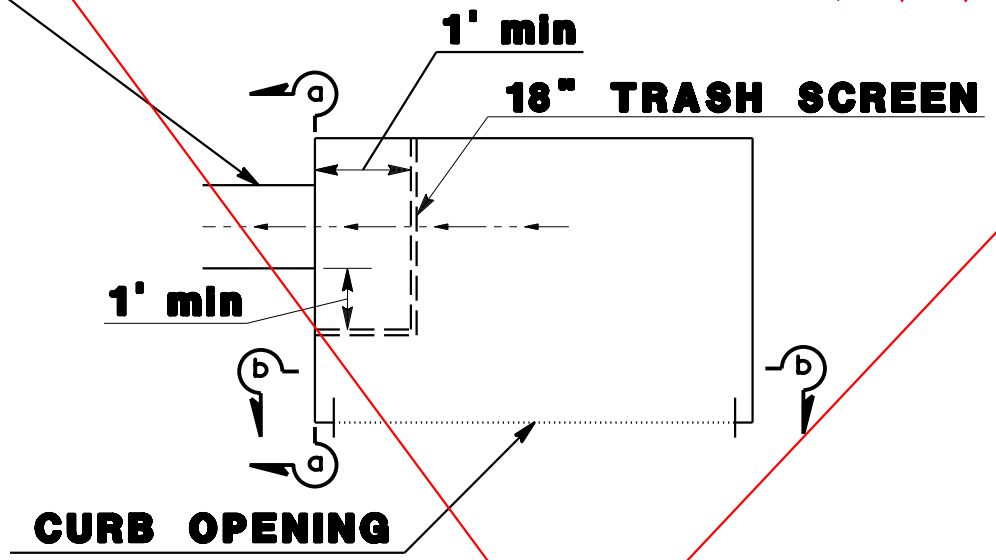
Dist	COUNTY	LOCATION CODE	POST MILES TOTAL PROJECT	SHEET No.	TOTAL SHEETS
				7	14
REGISTERED CIVIL ENGINEER			DATE		
PLANS APPROVAL DATE					
<small>THE STATE OF CALIFORNIA OR ITS OFFICERS OR AGENTS SHALL NOT BE RESPONSIBLE FOR THE ACCURACY OR COMPLETENESS OF SCANNED COPIES OF THIS PLAN SHEET.</small>					



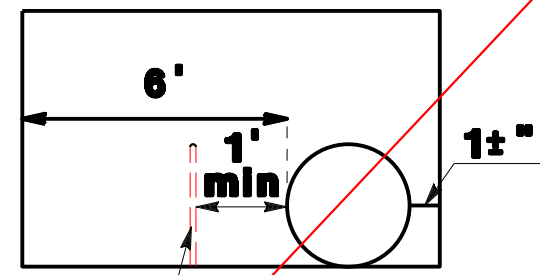
- NOTE:
1. H = HEIGHT OF TRASH SCREEN
 2. RECOMMENDATION: 18" HIGH TRASH SCREEN WITH NO BYPASS LID
 3. TOP EDGE OF TRASH SCREEN SHALL BE ROUNDED OR COVERED WITH A HORIZONTAL PIECE TO PROVIDE FOR WORKER SAFETY AND PREVENT DAMAGE TO INSPECTION CAMERA CABLES.
 4. BIOCLEAN ENVIRONMENTAL TO PROVIDE INSTALLATION OF TRASH SCREEN AT LOCATION 4.
 5. PLACE TRASH SCREEN MARKER. SEE SHEET 14.



18" OUTLET PIPE

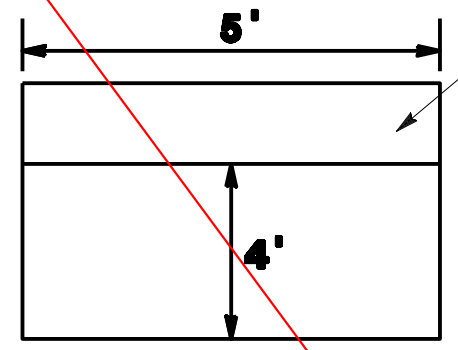


PLAN VIEW



H=18" TRASH SCREEN

SECTION a-a



SECTION b-b

NOT TO SCALE

**EXHIBIT - LOCATION 4
Washington & Juniper**



STATE OF CALIFORNIA - DEPARTMENT OF TRANSPORTATION
Caltrans

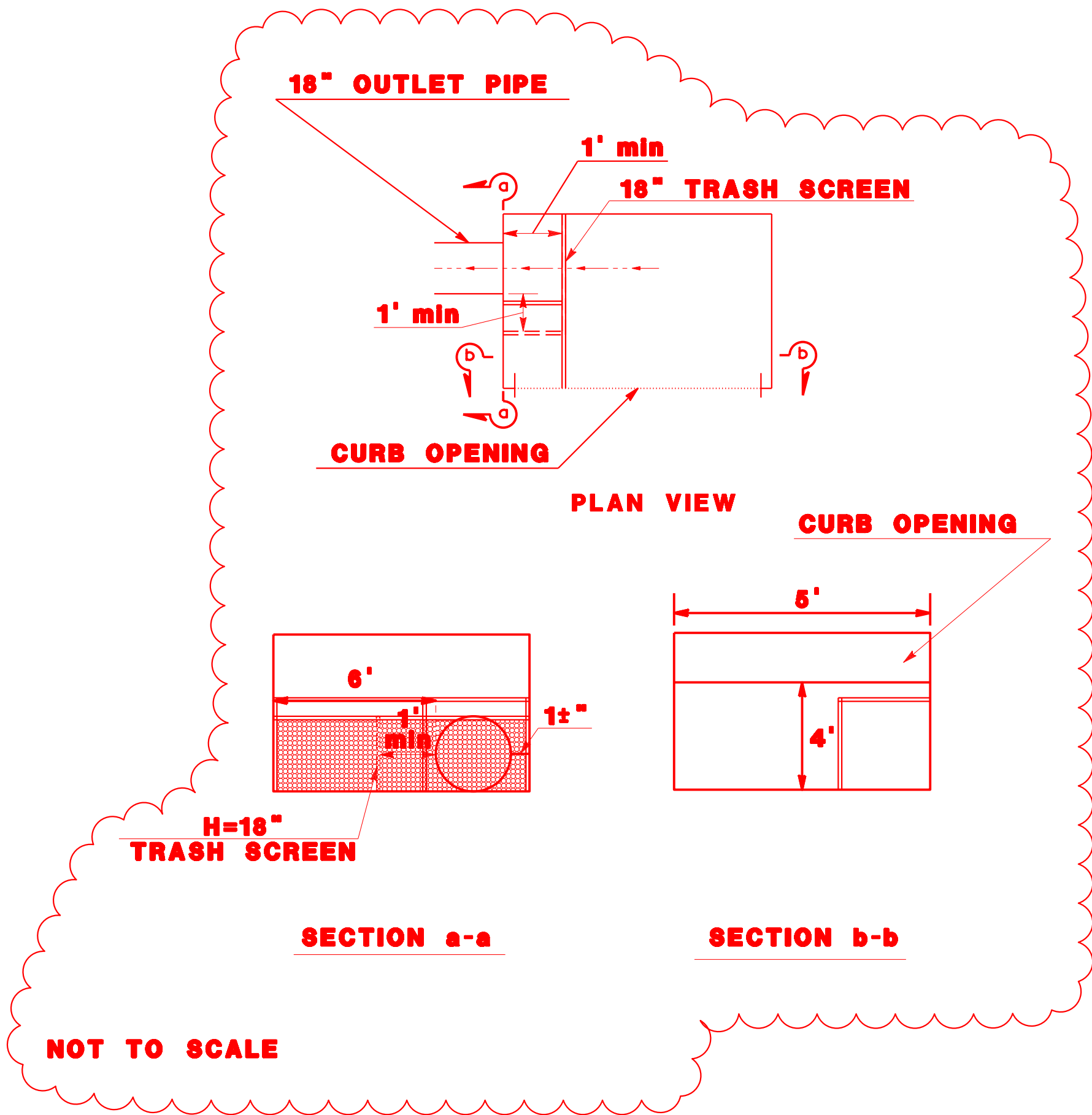
Dist	COUNTY	LOCATION CODE	POST MILES TOTAL PROJECT	SHEET No.	TOTAL SHEETS
				7a	14

REGISTERED CIVIL ENGINEER	DATE
PLANS APPROVAL DATE	

THE STATE OF CALIFORNIA OR ITS OFFICERS OR AGENTS SHALL NOT BE RESPONSIBLE FOR THE ACCURACY OR COMPLETENESS OF SCANNED COPIES OF THIS PLAN SHEET.



STATE OF CALIFORNIA - DEPARTMENT OF TRANSPORTATION	FUNCTIONAL SUPERVISOR	CALCULATED-DESIGNED BY	REVISOR BY
Caltrans		CHECKED BY	DATE REVISED



NOT TO SCALE

**EXHIBIT - LOCATION 4a
Washington & Juniper**

LAST REVISION DATE PLOTTED => 31-MAY-2022 00-00-00 TIME PLOTTED => 14:11

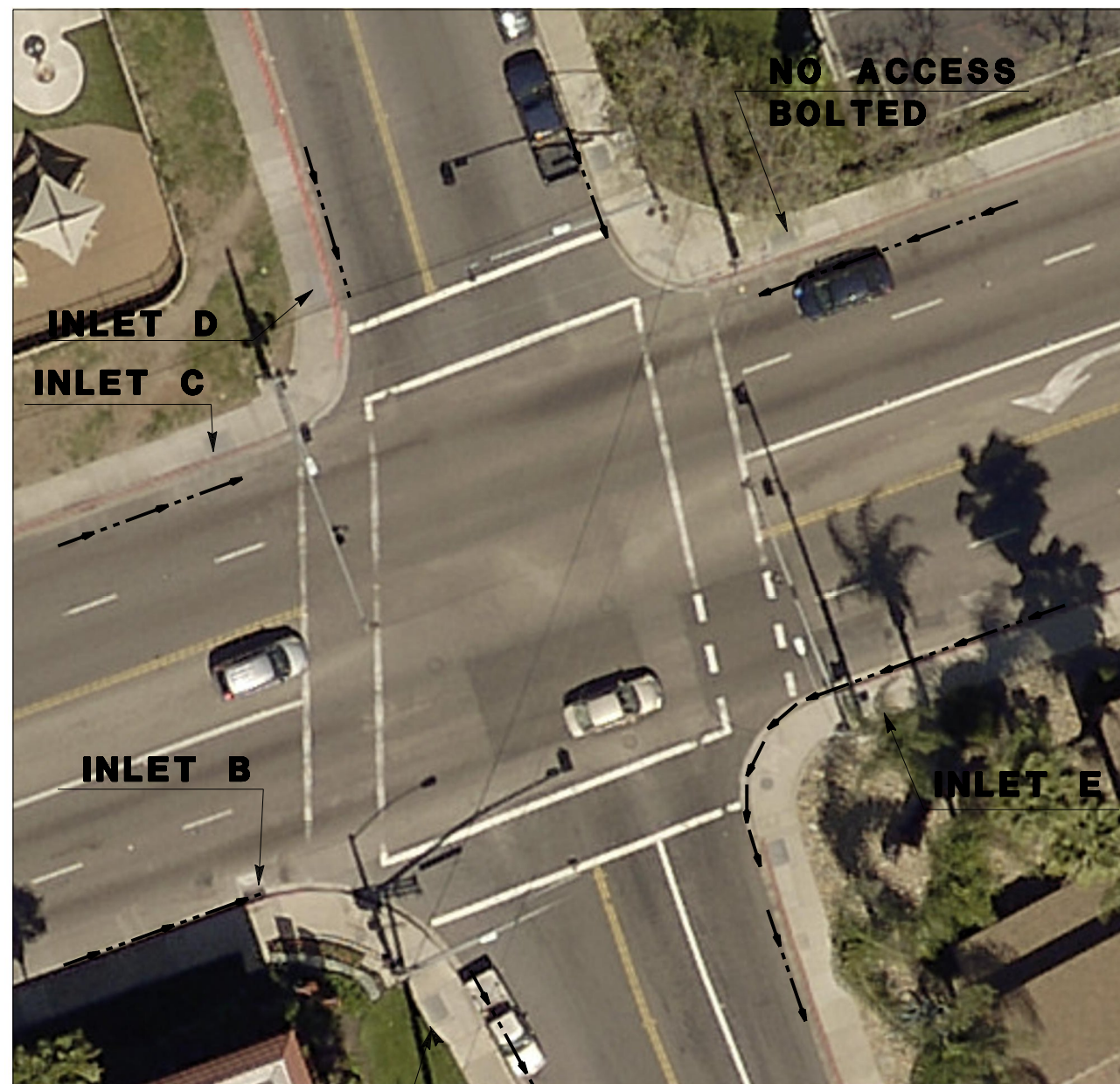
NOTE:
1. H = HEIGHT OF SCREEN

2. RECOMMENDATION:
 - INLET A - 24" HIGH TRASH SCREEN NO LID
 - INLET B - NO RECOMMENDATION (NO ACCESS)
 - INLET C - 18" HIGH TRASH SCREEN NO LID
 - INLET D - 12" HIGH TRASH SCREEN NO LID
 - INLET E - 12" HIGH TRASH SCREEN NO LID

3. TOP EDGE OF TRASH SCREEN SHALL BE ROUNDED OR COVERED WITH A HORIZONTAL PIECE TO PROVIDE FOR WORKER SAFETY AND PREVENT DAMAGE TO INSPECTION CAMERA CABLES.

4. BIOCLEAN ENVIRONMENT TO PROVIDE INSTALLATION OF ALL TRASH SCREENS AT LOCATION 5.

5. PLACE TRASH SCREEN MARKER. SEE SHEET 14.

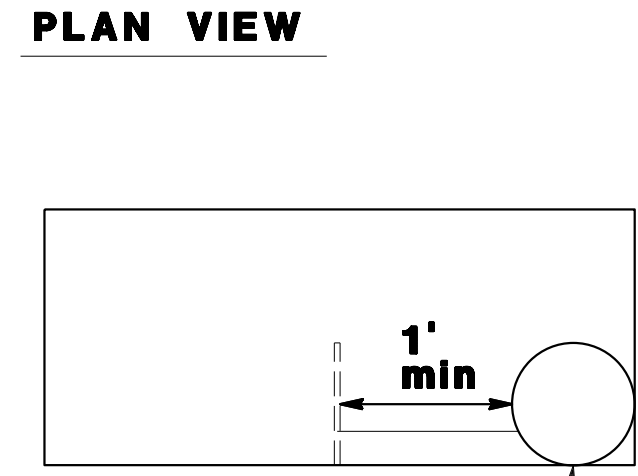
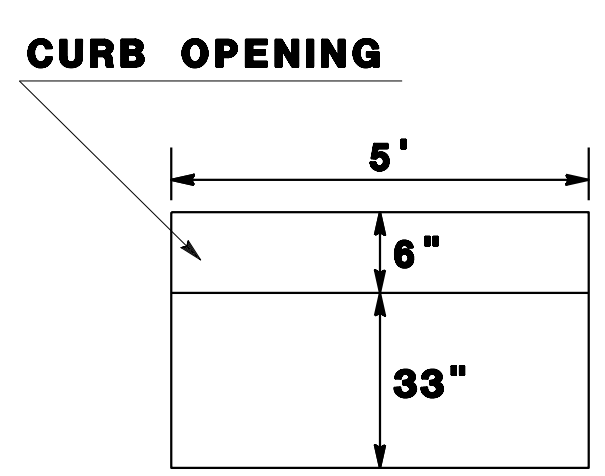
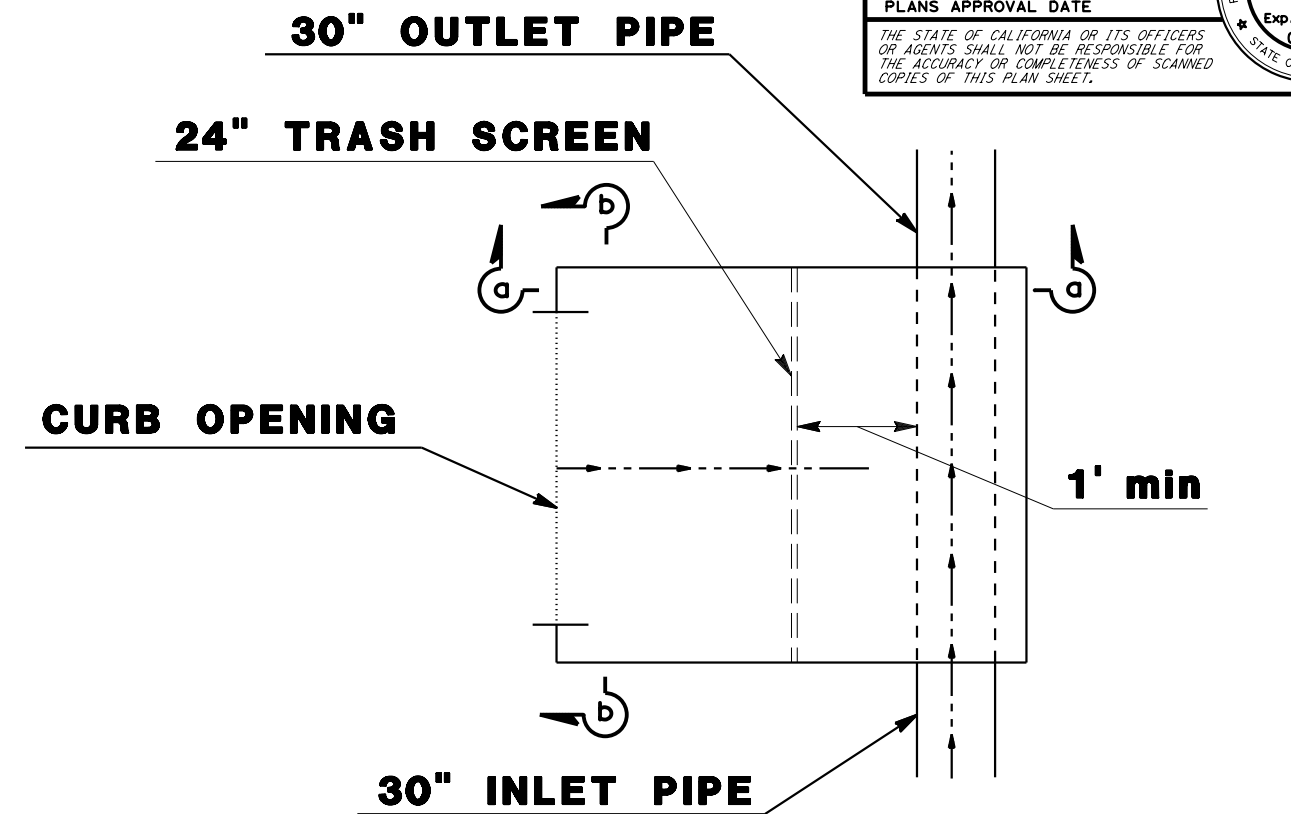


INLET A

NOT TO SCALE

Dist	COUNTY	LOCATION CODE	POST MILES TOTAL PROJECT	SHEET No.	TOTAL SHEETS
				8	14

REGISTERED CIVIL ENGINEER DATE _____
 PLANS APPROVAL DATE _____
 THE STATE OF CALIFORNIA OR ITS OFFICERS OR AGENTS SHALL NOT BE RESPONSIBLE FOR THE ACCURACY OR COMPLETENESS OF SCANNED COPIES OF THIS PLAN SHEET.



SECTION a-a
 QUARTER BENCHED BOTTOM

INLET "A"

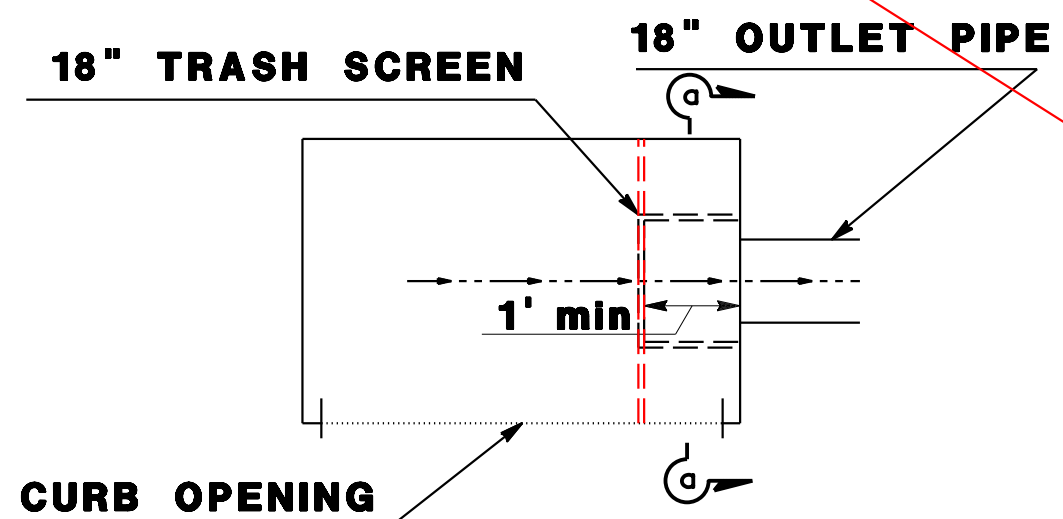
EXHIBIT - LOCATION 5
 Washington & Hickory
 (PAGE 1 OF 3)

STATE OF CALIFORNIA - DEPARTMENT OF TRANSPORTATION	FUNCTIONAL SUPERVISOR	CALCULATED-DESIGNED BY	REVISOR BY
Caltrans		CHECKED BY	DATE REVISED

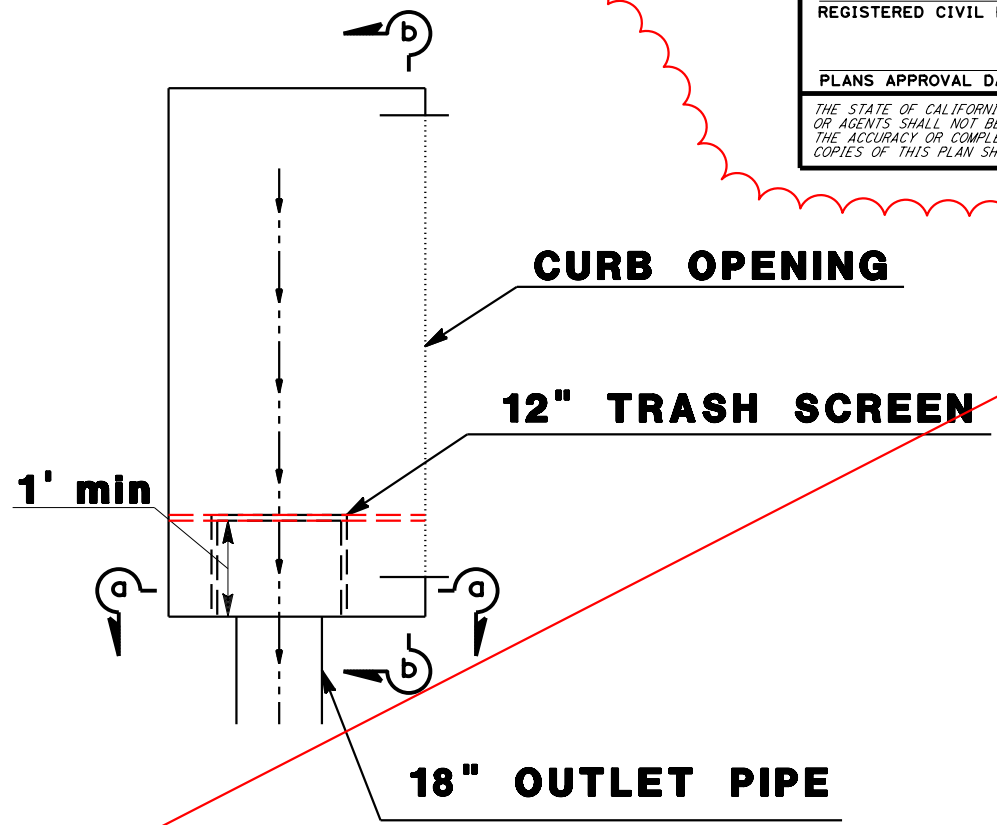
Dist	COUNTY	LOCATION CODE	POST MILES TOTAL PROJECT	SHEET No.	TOTAL SHEETS
				9	14
REGISTERED CIVIL ENGINEER			DATE		
PLANS APPROVAL DATE					
<small>THE STATE OF CALIFORNIA OR ITS OFFICERS OR AGENTS SHALL NOT BE RESPONSIBLE FOR THE ACCURACY OR COMPLETENESS OF SCANNED COPIES OF THIS PLAN SHEET.</small>					



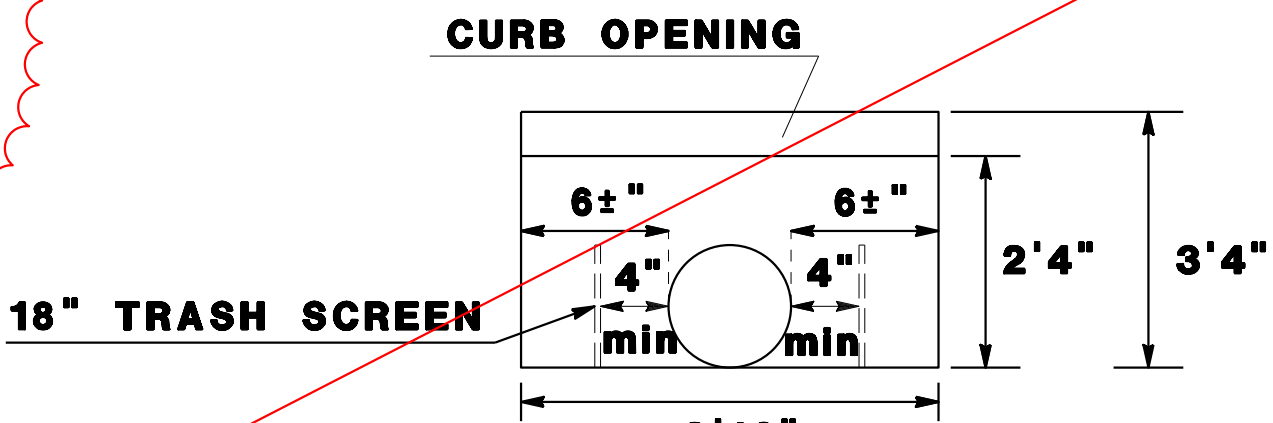
- NOTE:
- H = HEIGHT OF SCREEN
 - RECOMMENDATION:
 - INLET A - 24" HIGH TRASH SCREEN NO LID
 - INLET B - NO RECOMMENDATION (NO ACCESS)
 - INLET C - 18" HIGH TRASH SCREEN NO LID
 - INLET D - 12" HIGH TRASH SCREEN NO LID
 - INLET E - 12" HIGH TRASH SCREEN NO LID
 - TOP EDGE OF TRASH SCREEN SHALL BE ROUNDED OR COVERED WITH A HORIZONTAL PIECE TO PROVIDE FOR WORKER SAFETY AND PREVENT DAMAGE TO INSPECTION CAMERA CABLES.
 - BIOCLEAN ENVIRONMENT TO PROVIDE INSTALLATION OF ALL TRASH SCREENS AT LOCATION 5.
 - PLACE TRASH SCREEN MARKER. SEE SHEET 14.



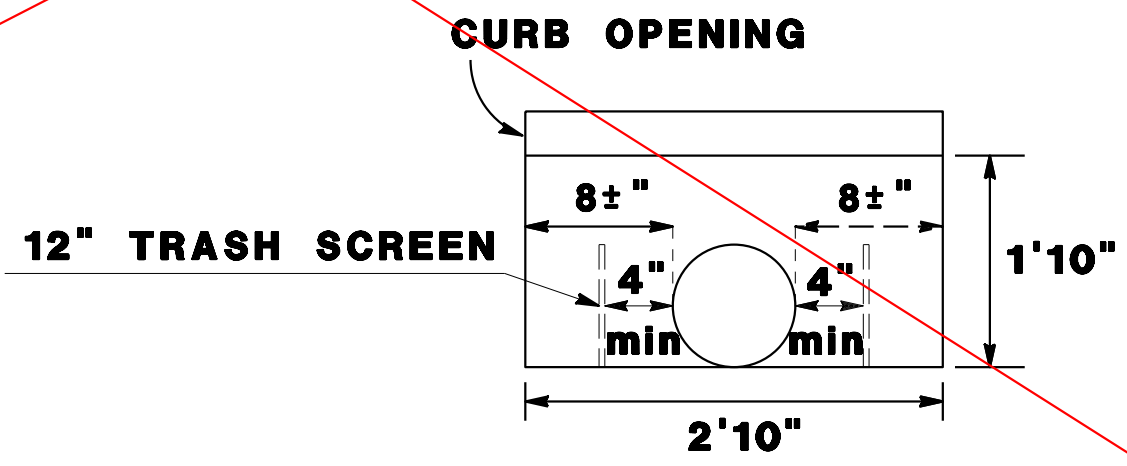
PLAN VIEW



PLAN VIEW



SECTION a-a
INLET "C"



SECTION a-a
INLET "D"

NOT TO SCALE

EXHIBIT - LOCATION 5
Washington & Hickory
(PAGE 2 OF 3)

STATE OF CALIFORNIA - DEPARTMENT OF TRANSPORTATION
Caltrans

x
x
x
x
x
x
x

REVISOR BY
DATE

CALCULATED-DESIGNED BY
CHECKED BY

FUNCTIONAL SUPERVISOR

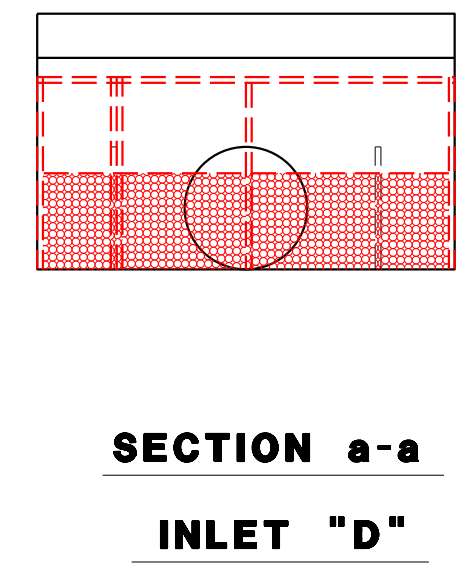
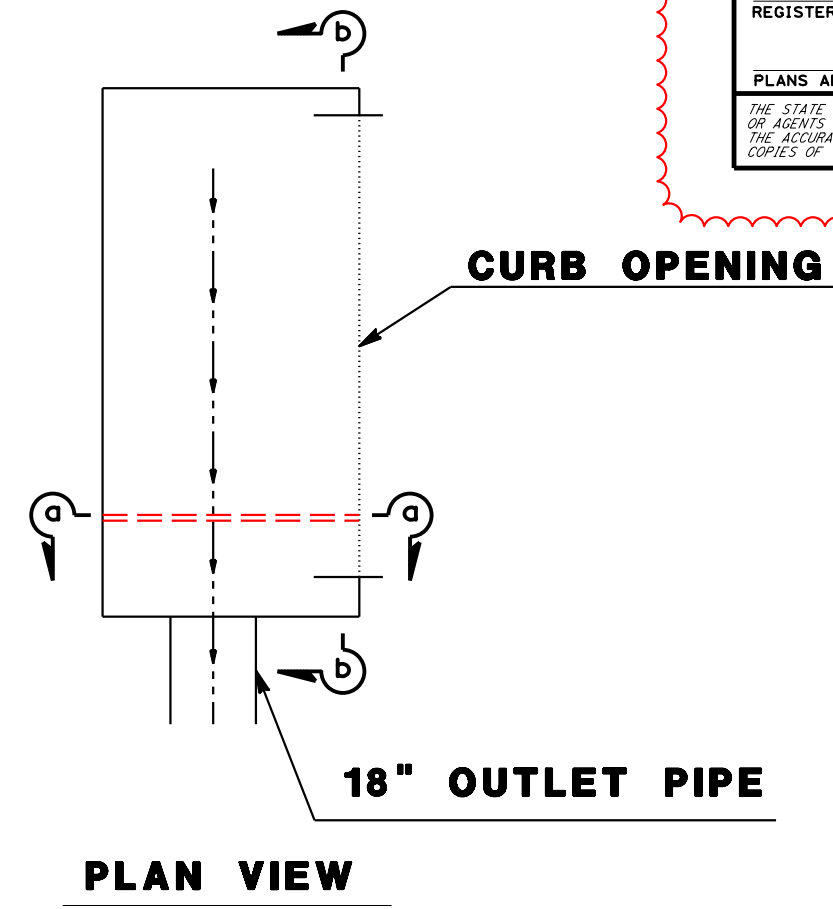
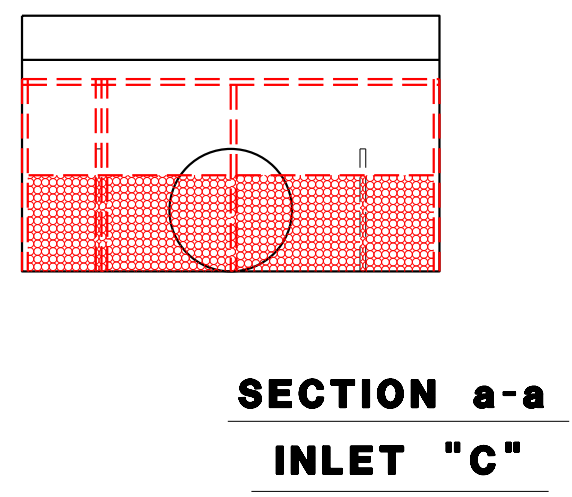
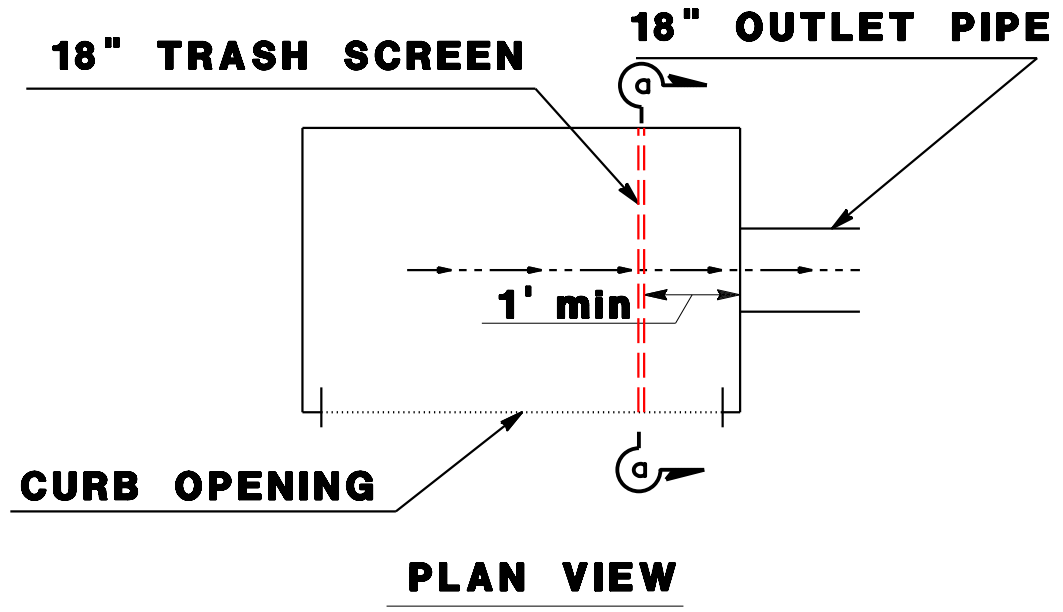
DEPARTMENT OF TRANSPORTATION

STATE OF CALIFORNIA - DEPARTMENT OF TRANSPORTATION
Caltrans

Dist	COUNTY	LOCATION CODE	POST MILES TOTAL PROJECT	SHEET No.	TOTAL SHEETS
				9a	14
REGISTERED CIVIL ENGINEER				DATE	
PLANS APPROVAL DATE				No.	
				Exp.	
				CIVIL	
<small>THE STATE OF CALIFORNIA OR ITS OFFICERS OR AGENTS SHALL NOT BE RESPONSIBLE FOR THE ACCURACY OR COMPLETENESS OF SCANNED COPIES OF THIS PLAN SHEET.</small>					

- NOTE:**
- H = HEIGHT OF SCREEN
- 2.RECOMMENDATION:**
- INLET A - 24" HIGH TRASH SCREEN NO LID
 - INLET B - NO RECOMMENDATION (NO ACCESS)
 - INLET C - 18" HIGH TRASH SCREEN NO LID
 - INLET D - 12" HIGH TRASH SCREEN NO LID
 - INLET E - 12" HIGH TRASH SCREEN NO LID

- TOP EDGE OF TRASH SCREEN SHALL BE ROUNDED OR COVERED WITH A HORIZONTAL PIECE TO PROVIDE FOR WORKER SAFETY AND PREVENT DAMAGE TO INSPECTION CAMERA CABLES.
- BIOCLEAN ENVIRONMENT TO PROVIDE INSTALLATION OF ALL TRASH SCREENS AT LOCATION 5.
- PLACE TRASH SCREEN MARKER. SEE SHEET 14.



NOT TO SCALE

EXHIBIT - LOCATION 5a
Washington & Hickory
(PAGE 2 OF 3)

STATE OF CALIFORNIA - DEPARTMENT OF TRANSPORTATION	FUNCTIONAL SUPERVISOR	CALCULATED-DESIGNED BY	REVISOR BY
Caltrans		CHECKED BY	DATE REVISED

LAST REVISION: DATE PLOTTED => 31-MAY-2022
 00-00-00 TIME PLOTTED => 14:16

Dist	COUNTY	LOCATION CODE	POST MILES TOTAL PROJECT	SHEET No.	TOTAL SHEETS
				10a	14
REGISTERED CIVIL ENGINEER			DATE		
PLANS APPROVAL DATE					
<small>THE STATE OF CALIFORNIA OR ITS OFFICERS OR AGENTS SHALL NOT BE RESPONSIBLE FOR THE ACCURACY OR COMPLETENESS OF SCANNED COPIES OF THIS PLAN SHEET.</small>					

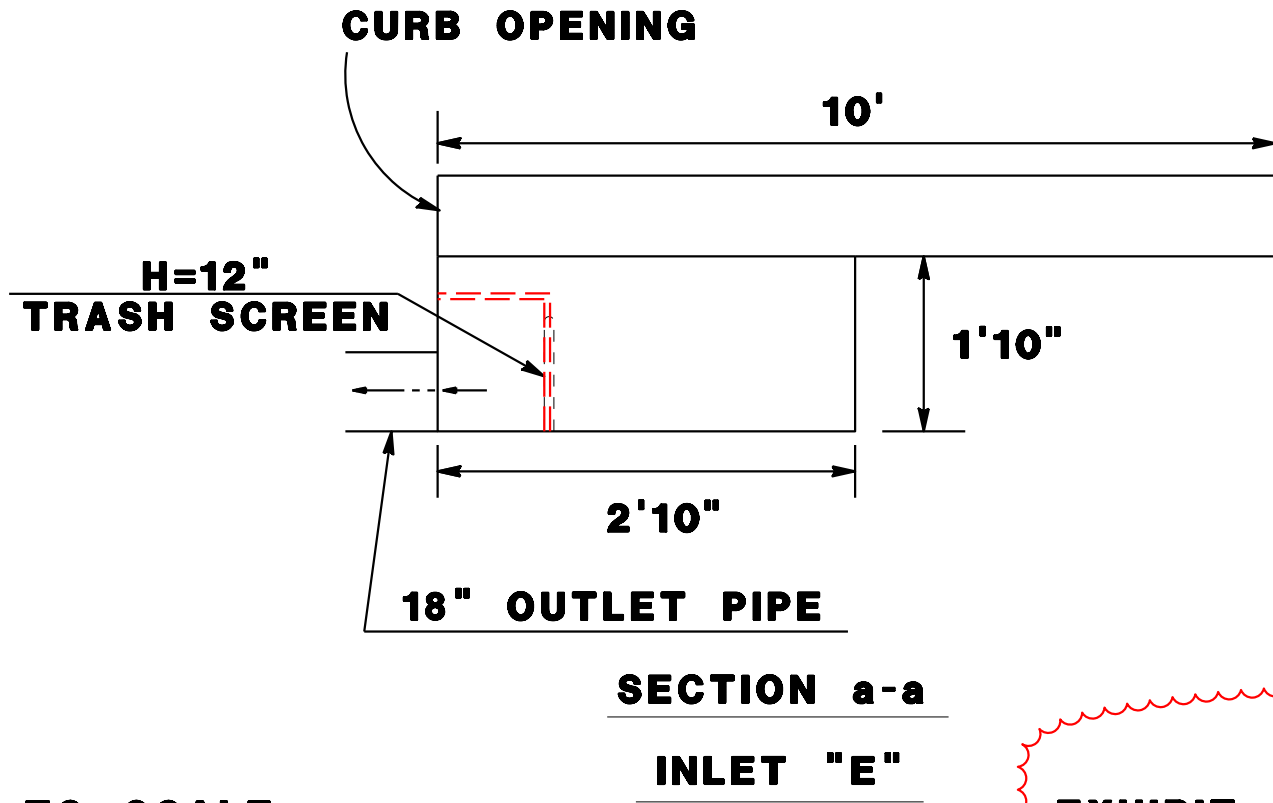
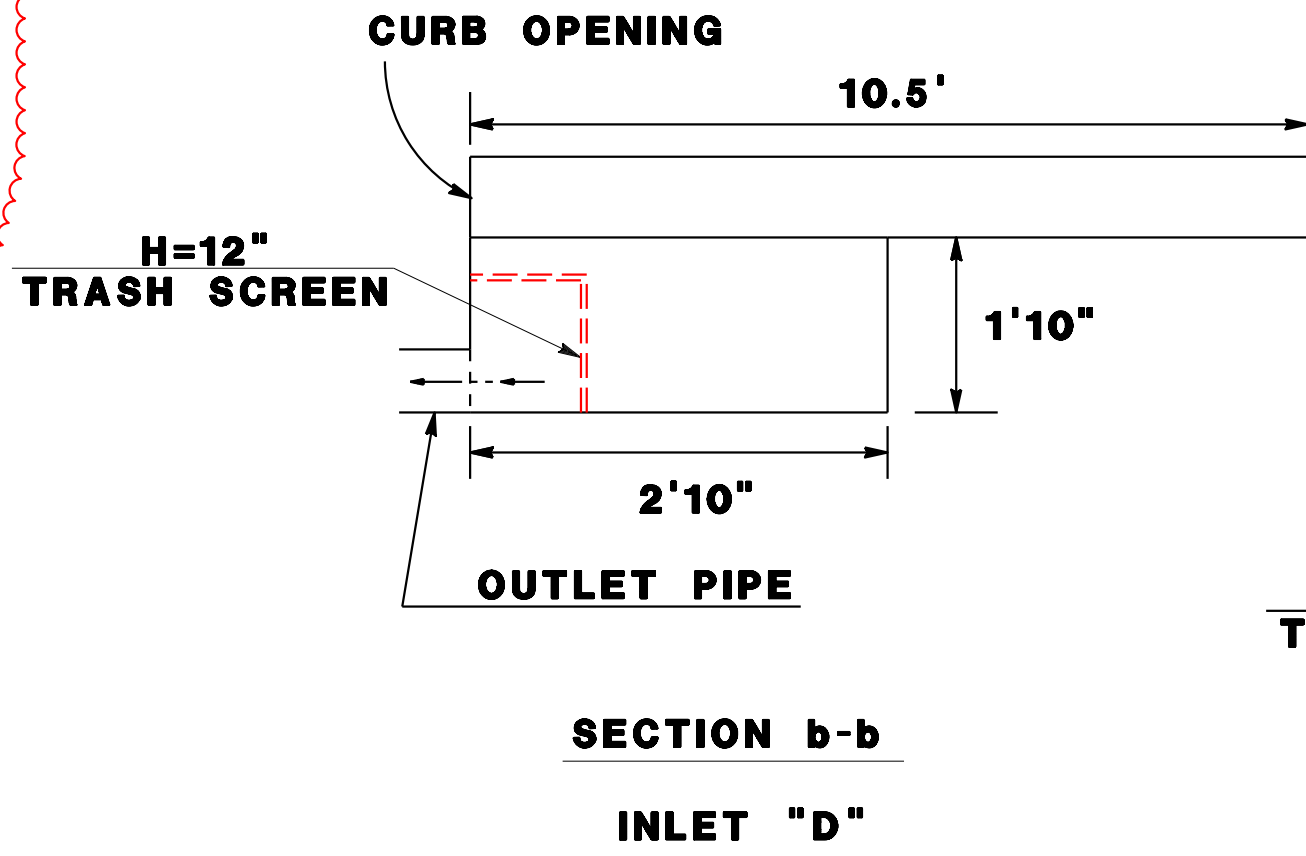
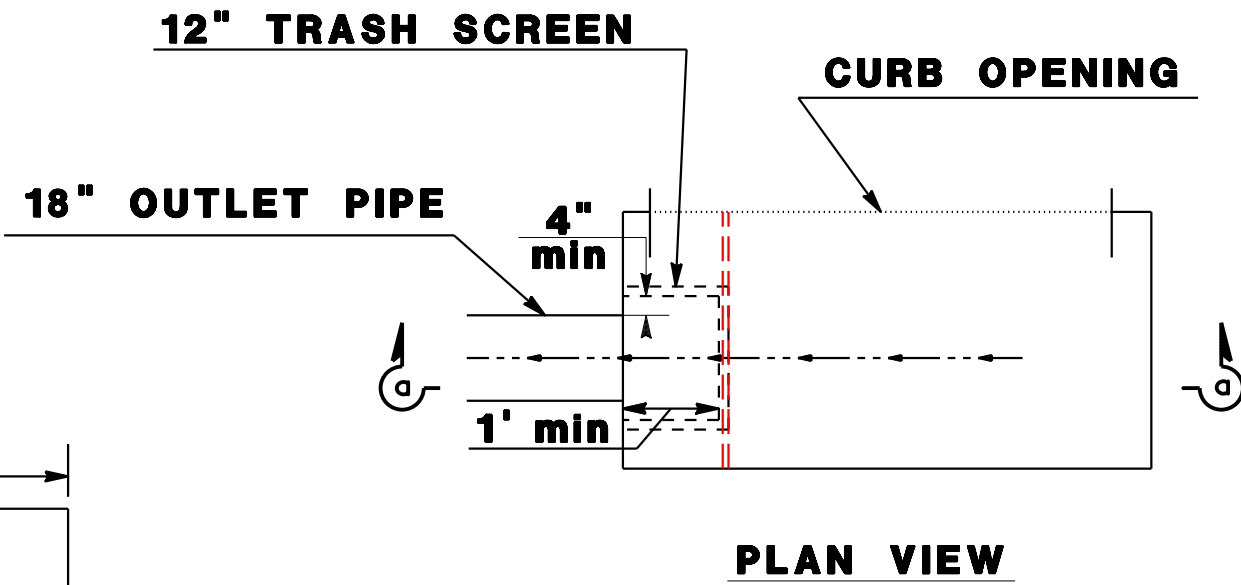


- NOTE:
- H = HEIGHT OF SCREEN
2. RECOMMENDATION:
- INLET A - 24" HIGH TRASH SCREEN NO LID
 - INLET B - NO RECOMMENDATION (NO ACCESS)
 - INLET C - 18" HIGH TRASH SCREEN NO LID
 - INLET D - 12" HIGH TRASH SCREEN NO LID
 - INLET E - 12" HIGH TRASH SCREEN NO LID

3. TOP EDGE OF TRASH SCREEN SHALL BE ROUNDED OR COVERED WITH A HORIZONTAL PIECE TO PROVIDE FOR WORKER SAFETY AND PREVENT DAMAGE TO INSPECTION CAMERA CABLES.

4. BIOCLEAN ENVIRONMENT TO PROVIDE INSTALLATION OF ALL TRASH SCREENS AT LOCATION 5.

5. PLACE TRASH SCREEN MARKER. SEE SHEET 14.



NOT TO SCALE

EXHIBIT - LOCATION 5a
Washington & Hickory
(PAGE 3 OF 3)

STATE OF CALIFORNIA - DEPARTMENT OF TRANSPORTATION
Caltrans

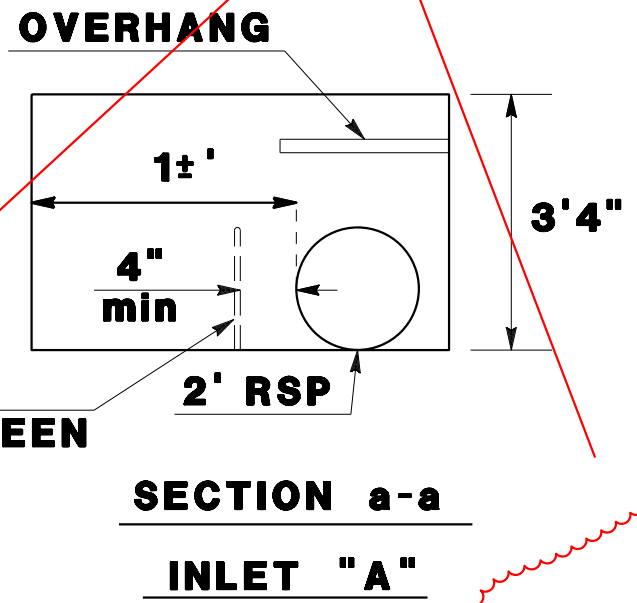
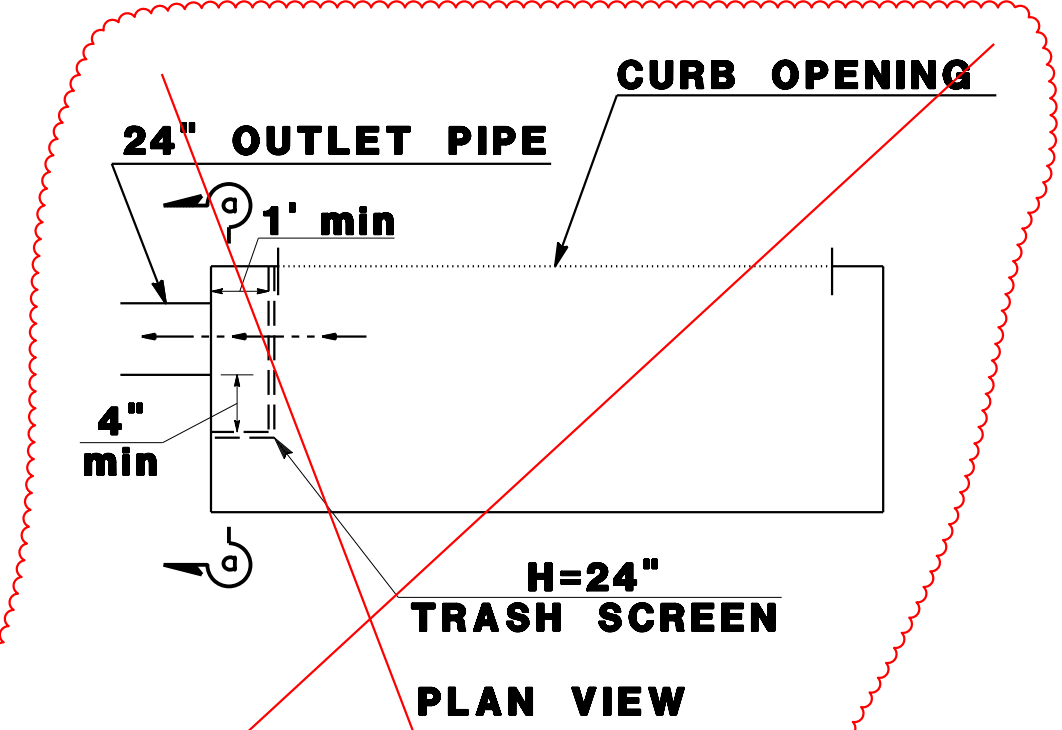
x
x
x
x
x
x
x
x
x
x
x

LAST REVISION DATE PLOTTED => 31-MAY-2022
00-00-00 TIME PLOTTED => 14:18

Dist	COUNTY	LOCATION CODE	POST MILES TOTAL PROJECT	SHEET No.	TOTAL SHEETS
				12	14
REGISTERED CIVIL ENGINEER			DATE		
PLANS APPROVAL DATE					
<small>THE STATE OF CALIFORNIA OR ITS OFFICERS OR AGENTS SHALL NOT BE RESPONSIBLE FOR THE ACCURACY OR COMPLETENESS OF SCANNED COPIES OF THIS PLAN SHEET.</small>					



- NOTE:
- H = HEIGHT OF TRASH SCREEN.
 - RECOMMENDATION:
 INLET "A" - 2' HIGH TRASH SCREEN NO LID
 INLET "C" - 2' TRASH SCREEN WITH HINGED LID
 - TOP EDGE OF TRASH SCREEN SHALL BE ROUNDED OR COVERED WITH A HORIZONTAL PIECE TO PROVIDE FOR WORKER SAFETY AND PREVENT DAMAGE TO INSPECTION CAMERA CABLES.
 - BIOCLEAN ENVIRONMENT TO PROVIDE INSTALLATION OF BOTH TRASH SCREENS AT LOCATION 8.
 - PLACE TRASH SCREEN MARKER. SEE SHEET 14.



NOT TO SCALE

**EXHIBIT - LOCATION 8
Washington & Ash
(PAGE 1 OF 2)**

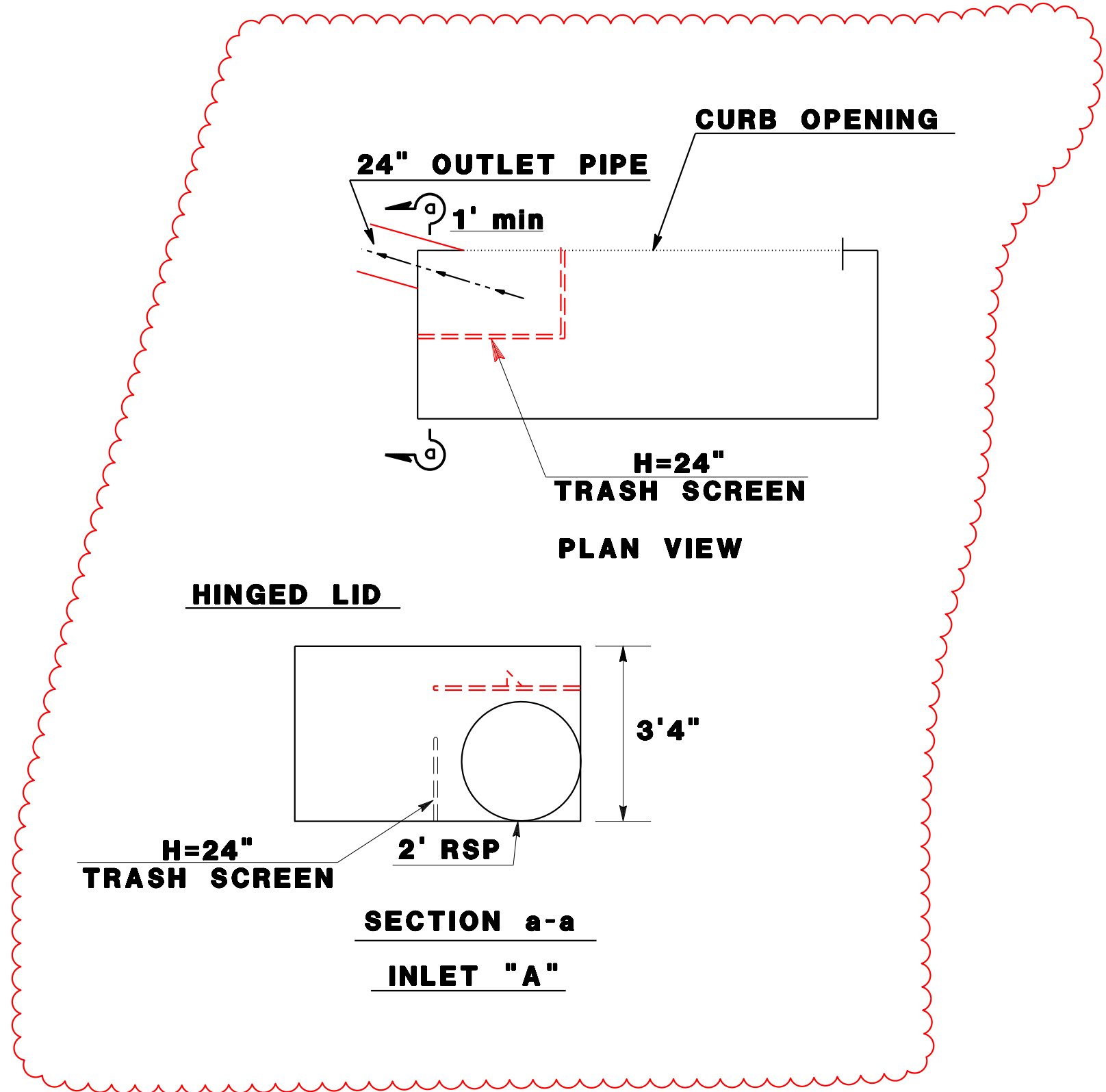
STATE OF CALIFORNIA - DEPARTMENT OF TRANSPORTATION
 Caltrans

LAST REVISION DATE PLOTTED => 31-MAY-2022
 00-00-00 TIME PLOTTED => 14:21

Dist	COUNTY	LOCATION CODE	POST MILES TOTAL PROJECT	SHEET No.	TOTAL SHEETS
				12a	14

REGISTERED CIVIL ENGINEER	DATE
PLANS APPROVAL DATE	

THE STATE OF CALIFORNIA OR ITS OFFICERS OR AGENTS SHALL NOT BE RESPONSIBLE FOR THE ACCURACY OR COMPLETENESS OF SCANNED COPIES OF THIS PLAN SHEET.



STATE OF CALIFORNIA - DEPARTMENT OF TRANSPORTATION	FUNCTIONAL SUPERVISOR	CALCULATED-DESIGNED BY	REVISOR BY
Caltrans		CHECKED BY	DATE REVISED

EXHIBIT - LOCATION 8a
Washington & Ash
(PAGE 1 OF 2)

LAST REVISION | DATE PLOTTED => 31-MAY-2022
00-00-00 | TIME PLOTTED => 14:23

Dist	COUNTY	LOCATION CODE	POST MILES TOTAL PROJECT	SHEET No.	TOTAL SHEETS
				13	14
REGISTERED CIVIL ENGINEER			DATE		
PLANS APPROVAL DATE					
<small>THE STATE OF CALIFORNIA OR ITS OFFICERS OR AGENTS SHALL NOT BE RESPONSIBLE FOR THE ACCURACY OR COMPLETENESS OF SCANNED COPIES OF THIS PLAN SHEET.</small>					



NOTE:

1. H = HEIGHT OF TRASH SCREEN.

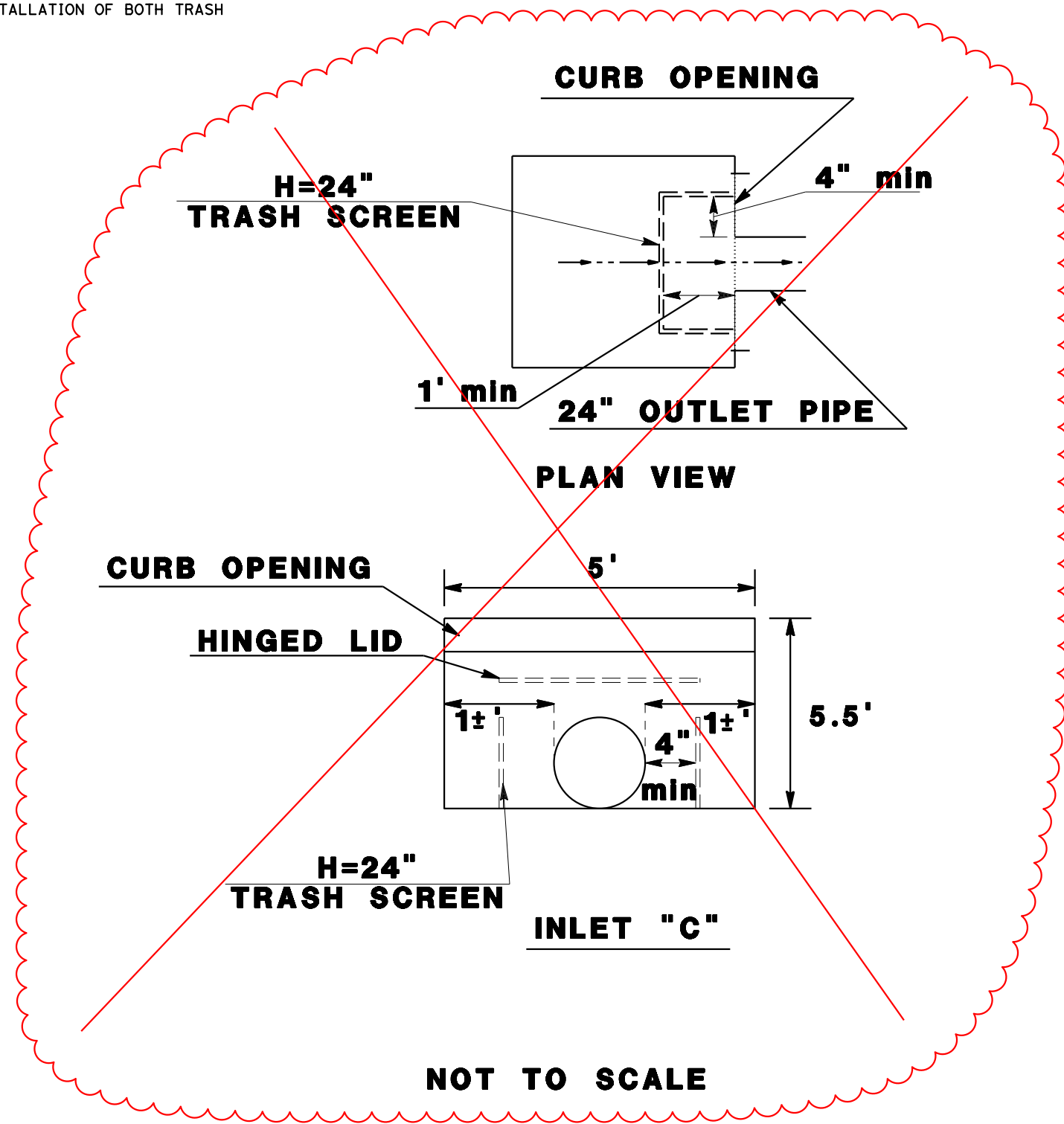
2. RECOMMENDATION:

INLET "A" - 2' HIGH TRASH SCREEN NO LID

INLET "C" - 2' HIGH TRASH SCREEN WITH HINGED LID

3. TOP EDGE OF TRASH SCREEN SHALL BE ROUNDED OR COVERED WITH A HORIZONTAL PIECE TO PROVIDE FOR WORKER SAFETY AND PREVENT DAMAGE TO INSPECTION CAMERA CABLES.

4. BIOCLEAN ENVIRONMENTAL TO PROVIDE INSTALLATION OF BOTH TRASH SCREENS AT LOCATION 8.



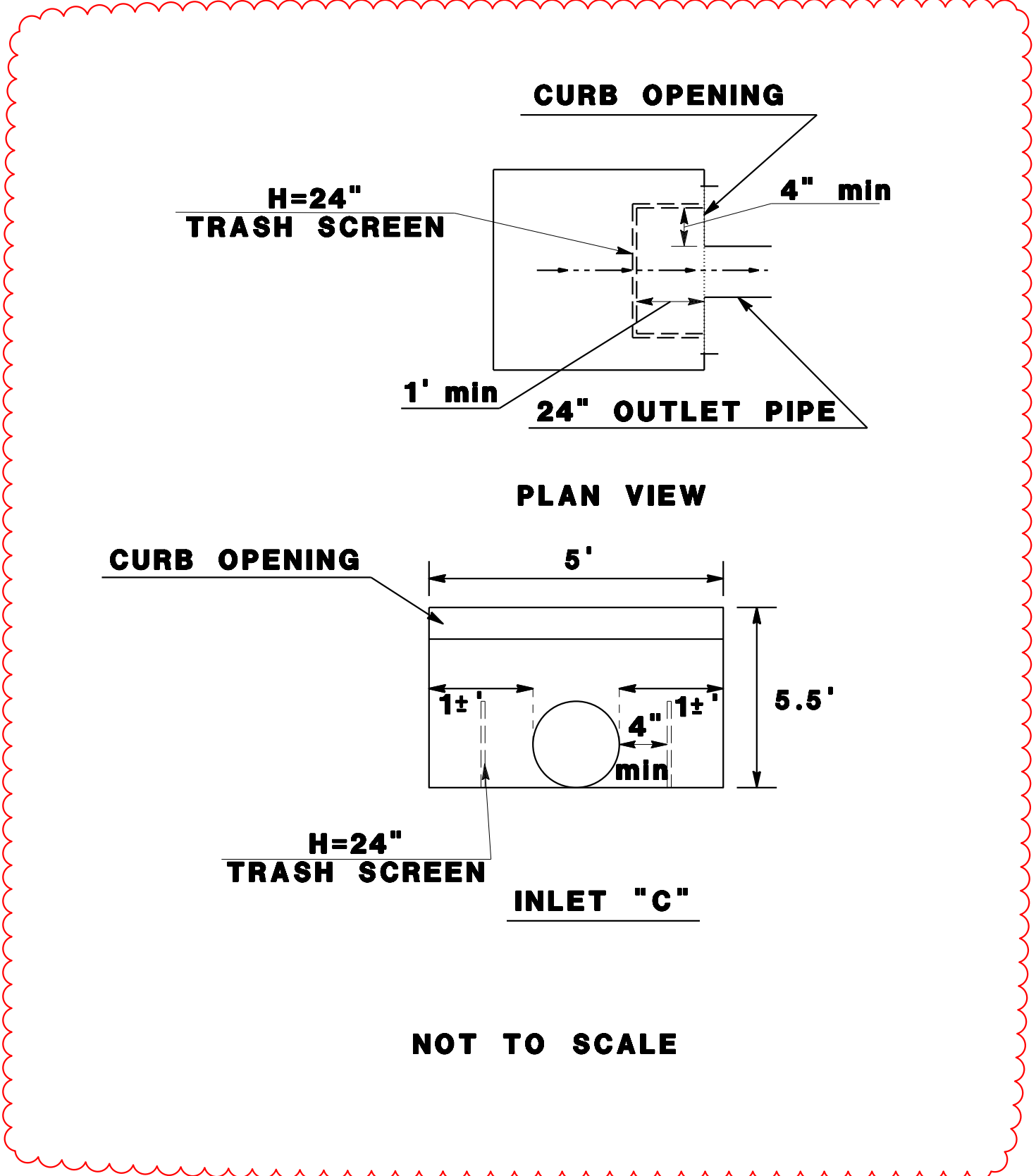
NOT TO SCALE

**EXHIBIT - LOCATION 8
Washington & Ash
(PAGE 2 OF 2)**

STATE OF CALIFORNIA - DEPARTMENT OF TRANSPORTATION	REVISOR	DATE	REVISION
Caltrans			
FUNCTIONAL SUPERVISOR	CHECKED BY	DESIGNED BY	CALCULATED BY
	REVISOR	DATE	REVISION

STATE OF CALIFORNIA - DEPARTMENT OF TRANSPORTATION	FUNCTIONAL SUPERVISOR	CALCULATED-DESIGNED BY	REVISOR BY
Caltrans		CHECKED BY	DATE REVISED

Dist	COUNTY	LOCATION CODE	POST MILES TOTAL PROJECT	SHEET No.	TOTAL SHEETS
				13a	14
REGISTERED CIVIL ENGINEER			DATE		
PLANS APPROVAL DATE					
<small>THE STATE OF CALIFORNIA OR ITS OFFICERS OR AGENTS SHALL NOT BE RESPONSIBLE FOR THE ACCURACY OR COMPLETENESS OF SCANNED COPIES OF THIS PLAN SHEET.</small>					



NOT TO SCALE

**EXHIBIT - LOCATION 8a
Washington & Ash
(PAGE 2 OF 2)**

LAST REVISION DATE PLOTTED => 31-MAY-2022 00-00-00 TIME PLOTTED => 14:25